

DOCUMENT 00 90 00
ADDENDUM

ADDENDUM NO. [1] **Date: May 17, 2022**

RE: FOREST PARK WINDOW REPLACEMENT
HOUSING AUTHORITY OF THE CITY OF LA CROSSE
1230 BADGER STREET
LA CROSSE, WISCONSIN 54601
PROJECT NO. 22023

FROM: HSR Associates, Inc
 100 Milwaukee Street
 La Crosse, WI 54603
 (608) 784-1830

To: Prospective Bidders

This addendum forms a part of the Contract Documents and modifies the original Bidding Documents dated April 2022. Acknowledge receipt of this Addendum in the space provided on the bid form. Failure to do so may subject the Bidder to disqualification.

This Addendum consists of [1] document, [4] specification sections, and [5] 30 x 42 drawings.

CHANGES TO BIDDING REQUIREMENTS AND CONDITIONS OF THE CONTRACT:

1. Pre-Bid Meeting Sign-In Sheet

GENERAL REQUIREMENTS:

1. Section 01 10 00 Summary
 - a. Revised section attached hereto
 - b. Added requirements to paragraph 1.07 B.1 Owner Occupancy.

CHANGES TO SPECIFICATIONS:

2. Section 08 54 13 Fiberglass Windows
 - a. Revised section attached hereto
 - b. Revised paragraph 1.01A to describe an operating sash
 - c. Added paragraph 1.01 E to describe a Grade Substantiation submittal.
 - d. Removed paragraph 1.05 B to remove mention of basement egress window.
 - e. Revised paragraph 2.01 A.2. to list Marvin Essential All Ultrex
 - f. Revised paragraph 2.02 A.2. to remove wording permitting the interior of the windows to be white color.
 - g. Added paragraph 2.03 A.2. to reference performance grade in accordance with applicable codes.
3. Section 08 71 00 Finish Hardware
 - a. Revised section attached hereto
 - b. Revised paragraph 2.01 Acceptable Manufacturers to list Dorma as an acceptable manufacturer of auto operators.

- c. Revised paragraph 2.08 A to add Dormakaba and Larco products.
- d. Revised Hardware Groups 3, 4 & 9 Exit Devices to list finishes of 626W or 630.
- e. Revised Hardware Groups 7 & 8 Revised quantities of Closer, Drop Plate, Blade Stop and Cush Shoe Support from 2 to 1 for each single door.

4. Section 09 91 23 Interior Painting

- a. Revised section attached hereto
- b. Revised the font and alignment of paragraph 2.03 E for IPS 29 for readability.

CHANGES TO DRAWINGS

5. Sheet A101 Eighth-Tenth Floor Plans

- a. Revised 30 x 42 sheet attached hereto
- b. See clouded changes.
- c. Revised key note 15 to clarify scope at door replacement.

6. Sheet A201 Exterior Elevations

- a. Revised 30 x 42 sheet attached hereto
- b. See clouded changes.
- c. Revised elevations to show double hung windows in lieu of sliding windows.

7. Sheet A200 Exterior Elevations

- a. Revised 30 x 42 sheet attached hereto
- b. See clouded changes.
- c. Revised elevations to show double hung windows in lieu of sliding windows.

8. Sheet A601 Door Schedule and Details

- a. Revised 30 x 42 sheet attached hereto
- b. See clouded changes.
- c. Revised window jamb extensions from ¼ plywood to ¾" solid wood. (See multiple details)
- d. Revised mullion details to show prefinished break-metal cover.
- e. Revised WDO Head Jamb & Sill details and WDO Elevations to show double hung type windows in lieu of sliding windows.
- f. Revised door frame types to show horizontal mullion at type LL and to call out break-metal mullion cover at type MM.

9. Sheet A602 Details

- a. Revised 30 x 42 sheet attached hereto
- b. See clouded changes.
- c. Revised WDO Sill detail to show double hung type windows in lieu of sliding windows.

END OF DOCUMENT 00 90 00

"SIGN-IN" SHEET

PROJECT: LHA Forest Park Window Replacement

HSR NO.: 22023 DATE: May 10, 2022



ARCHITECTURE
ENGINEERING
INTERIOR DESIGN

HSR Associates

Celebrating **65 Years** of Innovative Design
100 Milwaukee Street 608.784.1830
La Crosse, WI 54603 www.hsrassociates.com

PLEASE PRINT ALL INFORMATION CLEARLY

[illegible]

Page Intentionally Left Blank

SECTION 01 10 00

SUMMARY

PART 1 GENERAL

1.01 PROJECT

- A. Refer to Cover Sheet on Drawings for project title and location.
- B. Refer to 00 11 13 Advertisement for Bids for brief description of Project.

1.02 RELATED REQUIREMENTS

- A. Section 01 50 00 - Temporary Facilities: Requirements for temporary utilities.
- B. Section 01 70 00 - Administrative Requirements: Contract limits and protection of existing conditions.

1.03 CONTRACT DESCRIPTION

- A. Contract Type: A single prime contract based on a Stipulated Price as described in Document 00 52 00 - Agreement Form.

1.04 PHASED CONSTRUCTION

- A. The Work shall be conducted in a single phase.

1.05 WORK BY OTHERS

- A. Items indicated "N.I.C." on the Project Drawings will be furnished and installed by others not a party to the Prime Contracts.

1.06 OWNER OCCUPANCY

- A. Owner intends to continue to occupy the existing building during the entire construction period.
- B. Owner intends to occupy the Project area upon Substantial Completion.
- C. Cooperate with Owner to minimize conflict and to facilitate Owner's operations.
- D. Schedule the Work to accommodate Owner occupancy.
- E. Comply with Owner's requirements for accessing and coordinating access to units occupied/leased to residents.

1.07 CONTRACTOR USE OF SITE AND PREMISES

- A. Construction Operations: Limited to areas required to perform the work as authorized by the owner.
- B. Arrange use of site and premises to allow:
 - 1. Owner occupancy.
 - a. Perform work in residences with the occupants present.
 - b. Comply with Owner's apartment entry procedure. The procedure includes a requirement for minimum 48 hours advance notice to residents prior to entry.
 - c. Remove no more windows than can be replaced each day.
 - 2. Work by Others.
 - 3. Work by Owner.
- C. Provide access to and from site as required by law and by Owner:
 - 1. Emergency Building Exits During Construction: Keep all exits required by code open during construction period; provide temporary exit signs if exit routes are temporarily altered.
 - 2. Do not obstruct roadways, sidewalks, or other public ways without permit.
- D. Time Restrictions:
 - 1. Work on the Project shall be done during normal working hours. If at any time during construction it becomes necessary to accelerate the Work in order to meet completion dates for portions or all of the Work, all trades shall work overtime at no additional cost to Owner.
- E. Utility Outages and Shutdown:
 - 1. Notify Owner within 48 hours of necessary interruptions of services including, but not limited to: HVAC systems, water service (hot & cold), electrical service, communications systems.
 - 2. Do not disrupt or shut down life safety systems, including but not limited to fire sprinklers and fire alarm system, without 7 days notice to Owner and authorities having jurisdiction.
 - 3. Prevent accidental disruption of utility services to other facilities.

1.08 CONSTRUCTION SCHEDULE

- A. Date of Commencement of the Work: October 15, 2022
- B. Date of Substantial Completion: June 15, 2023
- C. Final Completion: The completion of all Work according to the contract Documents, approved by the AE and accepted by the Owner shall be within 30 days after the Date of Substantial Completion.
- D. Exceptions: The only exceptions to the above completion dates are delay or termination because of a national emergency and/or extension of time for completion claimed and allowed according to the General Conditions and/or Supplementary Conditions

1.09 WORK SEQUENCE

- A. Coordinate construction schedule and operations with Architect.

END OF SECTION

SECTION 08 54 13
FIBERGLASS WINDOWS

PART 1 GENERAL

1.01 SECTION INCLUDES

- A. Factory fabricated fiberglass windows with operating sash.
- B. Factory glazed.
- C. Insect screens.

1.02 RELATED REQUIREMENTS

- A. Section 06 20 00 - Finish Carpentry: Wood trim.
- B. Section 08 32 00 - Sliding Glass Doors: Coordinate manufacturer

1.03 REFERENCE STANDARDS

- A. AAMA/WDMA/CSA 101/I.S.2/A440 - North American Fenestration Standard/Specification for windows, doors, and skylights; 2011.
- B. ASTM E283/E283M - Standard Test Method for Determining Rate of Air Leakage Through Exterior Windows, Skylights, Curtain Walls, and Doors Under Specified Pressure Differences Across the Specimen; 2019.

1.04 SUBMITTALS

- A. See Section 01 30 00 - Administrative Requirements, for submittal procedures.
- B. Review Submittals - Preparatory
 - 1. Product Data: Provide component dimensions, anchors, fasteners, glass, and internal drainage details.
 - 2. Shop Drawings: Indicate opening dimensions, framed opening tolerances, affected related work, installation requirements.
 - 3. Grade Substantiation: Prior to submitting shop drawings or starting fabrication, submit one of the following showing compliance with specified grade:
 - a. Evidence of AAMA Certification.
 - b. Evidence of WDMA Certification.
 - c. Evidence of CSA Certification.
 - d. Test report(s) by independent testing agency itemizing compliance and acceptable to authorities having jurisdiction.
- C. Review Submittals - Samples
 - 1. Verification Samples: Submit sample of window corner/frame section.
 - 2. Selection Samples: Sample set of fiberglass materials for evaluating color and finish.
- D. Information Submittals - Preparatory
 - 1. Manufacturer's Certificate: Certify that products of this section meet or exceed specified requirements.
- E. Grade Substantiation: Prior to submitting shop drawings or starting fabrication, submit one of the following showing compliance with specified grade:
 - 1. Evidence of AAMA Certification.
 - 2. Evidence of WDMA Certification.
 - 3. Evidence of CSA Certification.
 - 4. Test report(s) by independent testing agency itemizing compliance and acceptable to authorities having jurisdiction.
- F. Closeout Submittals
 - 1. Warranty Documentation: Submit manufacturer warranty and ensure that forms have been completed in Owner's name and registered with manufacturer.

1.05 QUALITY ASSURANCE

- A. Manufacturer Qualifications: Company specializing in manufacturing products specified in this section, with not less than three years of documented experience.
- B. Provide products in this section from the same manufacturer as products in Section 08 32 00.

1.06 DELIVERY, STORAGE, AND HANDLING

- A. Protect finished surfaces with wrapping. Do not use adhesive papers or sprayed coatings that bond when exposed to sunlight or weather.
- B. Jig, brace, and box the window frame assemblies for transport to minimize flexing of members or joints.

1.07 FIELD CONDITIONS

- A. Do not install sealants when ambient temperature is less than 40 degrees F.
- B. Maintain this minimum temperature during and after installation of sealants.

1.08 WARRANTY

- A. Correct defective Work within a one year period after Date of Substantial Completion.
- B. Provide ten year manufacturer warranty for insulated glass units from seal failure, interpane dusting or misting, and replacement of same. Include coverage for degradation of color finish.

PART 2 PRODUCTS

2.01 MANUFACTURERS

- A. Fiberglass Windows:
 - 1. Pella Corporation; Pella Impervia Windows: www.pellacommercial.com/#sle.
 - 2. Marvin Essential All Ultrex.

2.02 WINDOW UNITS

- A. Fiberglass Windows: Hollow, tubular, multi-layer fiber reinforced material; factory fabricated; with vision glass, related flashings, anchorage and attachment devices.
 - 1. Configuration: As indicated on drawings .
 - 2. Color: Dark brown/broze.
 - 3. Movement: Accommodate movement between window and perimeter framing and deflection of lintel, without damage to components or deterioration of seals.
 - 4. System Internal Drainage: Drain to the exterior by means of a weep drainage network any water entering joints, condensation occurring in glazing channel, and migrating moisture occurring within system.

2.03 PERFORMANCE REQUIREMENTS

- A. Grade: AAMA/WDMA/CSA 101/I.S.2/A440 requirements for specific window type:
 - 1. Performance Class (PC): LC.
 - 2. Performance Grade (PG): Equivalent to or greater than design wind load.
- B. Design Pressure (DP): In accordance with applicable codes.
- C. Air Leakage: 0.1 cfm/sq ft maximum leakage when tested at 6.27 psf pressure difference in accordance with ASTM E283/E283M.

2.04 COMPONENTS

- A. Frame Size: Manufacturer's standard.
- B. Insect Screen Frame: Rolled aluminum frame of rectangular sections; fit with adjustable hardware; nominal size similar to operable glazed unit.
- C. Fasteners: Stainless steel.
- D. Sealant for Setting Sills and Sill Flashing: Non-curing butyl type.

2.05 GLASS AND GLAZING MATERIALS

- A. Insulating glass, high performance low-e with argon gas.
- B. Factory glazed, manufacturer's standard installation.
- C. Ground floor windows shall be tempered glass both panes, both sashes. Windows at all upper floors shall have tempered interior pane, float glass exterior pane, both sashes.

2.06 HARDWARE

- A. Double Hung Sash: Metal and nylon spiral friction slide cylinder, each sash, each jamb.
 - 1. Sash Lock: Manufacturer's standard.

2.07 FABRICATION

- A. Fabricate components with minimum clearances and shim spacing around perimeter of assembly, yet enabling installation and dynamic movement of perimeter seal.
- B. Arrange fasteners to be concealed from view.
- C. Permit internal drainage weep holes and channels to migrate moisture to exterior. Provide internal drainage of glazing spaces to exterior through weep holes.
- D. Double weatherstrip operable units.

PART 3 EXECUTION

3.01 INSTALLATION

- A. Install windows in accordance with manufacturer's instructions.
- B. Attach window frame and shims to perimeter opening to accommodate construction tolerances and other irregularities.
- C. Align window plumb and level, free of warp or twist. Maintain dimensional tolerances and alignment with adjacent work.
- D. Provide thermal isolation where components penetrate or disrupt building insulation. Pack fibrous insulation in shim spaces at perimeter of assembly to maintain continuity of thermal barrier.

3.02 ADJUSTING

- A. Adjust hardware for smooth operation and secure weathertight closure.

3.03 CLEANING

- A. Remove protective material from pre-finished surfaces.
- B. Wash surfaces by method recommended and acceptable to window manufacturer; rinse and wipe surfaces clean.

END OF SECTION

Page Intentionally Left Blank

SECTION 08 71 00

FINISH HARDWARE

PART 1: GENERAL

1.01 RELATED DOCUMENTS

- A.** Conditions of the Contract and portions of Division One of this Project Manual apply to this Section as though repeated herein.

1.02 WORK INCLUDED

- A.** Furnish all finish hardware specified herein, listed in the hardware schedule, or required by the drawings.
- B.** Where items of hardware are not definitely or correctly specified and are required for the intended service, such omission, error, or other discrepancy should be directed to the Architect prior to the bid date for clarification by addendum. Otherwise, furnish such items in the type and quantity established by this specification for the appropriate service intended.

1.03 RELATED WORK

- A.** Section 08 16 13 – Fiberglass Doors
- B.** Section 08 43 13 – Aluminum-Framed Storefronts: All hardware including cylinders to be supplied by 08 71 00. Manufacturer's standard weatherstrip and sweeps shall be supplied by aluminum door and frame supplier.
- C.** Division 26-28 – Electrical & Access Control

1.04 REFERENCES

- A.** A.D.A. - Americans with Disabilities Act.
- B.** ANSI ICC A117.1-2009: Specifications for making facilities accessible.
- C.** NFPA 80 - Standards For Fire Doors and Windows.
- D.** NFPA 101 - Life Safety Code.
- E.** U.L. - Building Material Directory.
- F.** D.H.I. - Recommended Locations for Architectural Hardware.
- G.** Applicable State and Local Building Codes, including IBC 2009.

1.05 SUBMITTALS

- A.** Submit five (5) copies of a detailed hardware schedule, vertical format. Prepare under the supervision of an AHC, registered Architectural Hardware Consultant, and under provisions of Division One.
 - 1. Itemize hardware in the sequence and format established by this specification.
 - 2. List and describe each opening separately. Include all doors with identical hardware, except hand, in a single heading. Include door number, room designations, degree of swing, and hand.
 - 3. List related details. Include dimensions, door and frame material, and other considerations affecting hardware.
 - 4. List all hardware items to be supplied. Include manufacturer's name, quantity, product name, catalog number, size, finish, attachments, and related details where applicable.
 - 5. Resubmit five (5) copies of the corrected schedule when required.

- B. Keying Schedule: After receipt of approved hardware schedule submit a copy of keying schedule as a result of a keying meeting between the Owner and the hardware supplier.
- C. Samples: If so directed by the Architect, submit samples of finish hardware items for approval. Properly identify each sample as to make and number, and furnish in the specified finish.
- D. Templates: Furnish a copy of approved hardware schedule, along with applicable templates for factory-prepared hardware to each door and frame fabricator.
- E. Electrical Hardware: Submit electrical specifications and applicable information to the electrical contractor after receipt of the approved hardware schedule.
- F. Substitutions: Submit under provisions of Division One. Provide detailed information and catalog cuts indicating the comparison to the specified hardware. If requested by the Architect, provide a sample accompanied by a sample of the specified item for comparison.

1.06 QUALITY ASSURANCE

- A. Qualifications:
 - 1. Manufacturer: Except where specified in the hardware schedule, furnish products of only one manufacturer for each type of hardware.
 - 2. Supplier: A company experienced in the builders' hardware industry for a minimum of two (2) years, and can call upon an AHC, registered Architectural Hardware Consultant, for consultation during the full extent of the project
- B. Regulatory Requirements:
 - 1. Furnish UL or Warnock Hersey listed hardware for all fire labeled and 20 minute openings in conformance with requirements for class of opening scheduled, whether specifically called for in this specification or not.
 - 2. Furnish hardware that conforms to all applicable state and local building codes, including IBC 2000 positive pressure testing requirements. Where specified hardware is not in conformance with applicable codes, such omission or error should be directed to the Architect prior to the bid date for clarification by addendum; otherwise furnish hardware as required by code.
- C. Training and Inspection:
 - 1. Hold pre-installation meeting to coordinate training of installation personnel. Installers shall be trained by manufacturer's representative.
 - 2. Manufacturer's representative shall inspect installation of hardware as part of substantial completion requirements.

1.07 DELIVERY, STORAGE AND HANDLING

- A. Deliver, store and handle in accordance with Division One. Mark each original container with a door number that corresponds to the approved hardware schedule for the installation location.
- B. Receive, inventory and store hardware in a secure and dry environment; protect against loss and damage.
- C. Report any shortages to the hardware supplier no later than 48 hours after receipt of delivery to the job site.
- D. Stockpile items sufficiently in advance to ensure their availability. Coordinate delivery, handling, and installation of hardware items to ensure orderly progress of total work, and minimize or eliminate losses and damage.

PART 2: PRODUCTS

2.01 ACCEPTABLE MANUFACTURERS

<u>Products</u>	<u>Specified</u>	<u>Acceptable</u>
Hinges	PBB	Stanley, McKinney, Hager
Locks and Latches	BEST	NO SUB
Push/Pull Latches	Rockwood	Trimco, Burns, Hager
Exit Devices	Precision	
Door Closers	Stanley	LCN
Auto Operators	Stanley	Dorma
Protective Plates	Rockwood	Burns, Hager
Overhead Stops/Holders	ABH	Dorma, Glynn Johnson
Wall Stops/Floor Stops	Rockwood	Trimco, Hager, DCI
Thresholds, Sweeps, Weatherstrip	Reese	National Guard Products, Pemko

2.02 HINGES

A. Acceptable manufacturers and respective catalog numbers:

<u>Description</u>	<u>P.B.B.</u>	<u>Stanley</u>	<u>McKinney</u>	<u>Hager</u>
Std. Wt. Plain Bearing - Steel	PB81	F179	T2714	1279
Std. Wt. Ball Bearing - Steel	BB81	FBB179	TA2714	BB1279
Std. Wt. Ball Bearing -non ferrous	BB21/BB51	FBB191	TB2314	BB1191
Hvy. Wt. Ball Bearing Steel	4B81	FBB168	T4B3786	BB1168
Hvy. Wt. Ball Bearing – non ferrous	4B21/4B51	FBB179	T4B3386	BB1199

B. Hinges supplied must be tested and comply with ANSI/BHMA standards for consistency, wear and corrosion resistance.

C. Quantity: Furnish hinges for each door leaf as follows, unless otherwise noted in groups:

1. Doors up to and including 90" high - 3 hinges.
2. Doors over 90" high through 120" high - 4 hinges.

D. Type: Furnish as follows, unless otherwise noted in groups:

1. Standard weight, plain bearing hinge for interior openings through 36" wide without a door closer.
2. Standard weight, ball bearing hinge for interior openings over 36" through 40" wide with a door closer, and for interior openings through 40" wide with a door closer.
3. Heavy weight, four ball bearing hinge for all exterior openings unless noted in groups.

E. Size: Furnish as follows, unless otherwise noted in groups:

1. 1 3/4" doors: 4-1/2" x 4-1/2"
2. Provide proper hinge width to clear trim and allow full 180° swing.

F. Hinges for all lockable doors opening outward shall have non-removable pin (NRP). All other hinges shall have non-rising pins.

2.03 LOCKS AND LATCHES

A. Acceptable manufacturers and respective catalog numbers:

<u>Description</u>	<u>Best</u>
Cylinders	Rim and Mortise 1E

- B.** Furnish lock types and functions as specified in the hardware schedule, and as follows:
1. Provide 2-3/4" backset.
 2. Provide 2-3/4" x 1-1/8" "T" strike with a dust box for use in wood doors or frames.
 3. Provide 4-7/8" x 1-1/4" ANSI strike for installation in a hollow metal door or frame.
 4. Locksets to conform to ANSI A156.2, Series 4000, Grade 1 and be UL listed.

2.04 EXIT DEVICES

- A.** Acceptable manufacturers and respective catalog numbers:

<u>Description</u>	<u>Precision</u>
Wide Stile Rim	2100
Wide Stile Surf. Vert. Rod	2200
Wide Stile Conc. Vert. Rod	2800
Wide Stile Mortise	2300
Narrow Stile Rim	2400
Narrow Stile Conc. Vert. Rod	2600

- B.** Furnish exit device types and functions as specified in the hardware schedule.
- C.** Lever handles supplied with exit devices shall match the design specified for locks and latches.

2.05 PULLS, PUSHBARS, PUSH/PULL PLATES

- A.** Acceptable manufacturers and respective catalog numbers:

<u>Description</u>	<u>Rockwood</u>	<u>Trimco</u>	<u>Burns</u>
--------------------	-----------------	---------------	--------------

- B.** Supply product as listed in groups or equal to acceptable manufacturers.

2.06 DOOR CLOSERS

- A.** Acceptable manufacturers and respective catalog numbers:

<u>Description</u>	<u>LCN</u>	<u>STANLEY</u>
Heavy Duty Reg. Arm	4041	QDC SERIES
Heavy Duty Parallel Arm	4041 EDA	
Heavy Duty Stop Arm	4041 CUSH	

- B.** Furnish complete with mounting brackets, drop plates, spacers, special shoes, and thru bolts as may be required by the door and frame conditions.

2.07 PROTECTIVE PLATES

- A.** Acceptable manufacturers: Rockwood, Trimco, Burns, Hager.
- B.** All kickplate heights shall be as listed in groups and 2" less door width single doors and 1" less for pairs.
- C.** Thickness shall be .050" (16 gauge).

2.08 LOW ENERGY AUTOMATIC OPERATORS

- A. Acceptable manufacturers and respective catalog numbers:

<u>Description</u>	<u>STANLEY</u>	<u>Dorma</u>	<u>Larco</u>
Operator -	D4990	ED090	
Hard Wired Wall Switch	AS REQ		
Wireless Wall Switch	CL4990 KIT	see Larco	4R1R4 & J01J4
Wireless Receiver	CL4990 KIT	see Larco	233804

- B. Provide arms, mounting plates, sizes, stops, and any component that may be necessary to interface with electrified hardware that are required for complete and proper operation of the openings affected. Completed installation must meet or exceed requirements of ANSI A159.19.
- C. Provide actuators as detailed in groups.
- D. Conduit, electrical back boxes, wiring, and 120 VAC input power by Division 16 - Electrical.

2.09 OVERHEAD STOPS/HOLDERS

- A. Acceptable manufacturers and respective catalog numbers:

<u>Description</u>	<u>A.B.H.</u>	<u>Dormakaba</u>	<u>Glynn Johnson</u>
Heavy Duty Surface	9000	900	90
Heavy Duty Concealed	1000	910	100
Standard Duty Surface	4400	700	450
Standard Duty Concealed	4000	710	410

- B. Furnish an overhead stop if a door opens against equipment, casework, sidelights, or other objects that would make wall bumpers inappropriate, and as specified in the hardware groups.

2.10 WALL STOPS

- A. Acceptable manufacturers and respective catalog numbers:

<u>Description</u>	<u>Rockwood</u>	<u>Hager</u>
Wrought Convex Wall	407	232W
Wrought Concave w/Toggle	409	237W

- B. When "wall stop" is called for in hardware group, provide 407 or 409. When overhead stops are required, they will be specified by product number in the group.
- C. Wall stops shall not be mounted to casework, cabinet work, sidelights, or equipment.

2.11 THRESHOLDS, SWEEPS, WEATHERSTRIP, DRIP CAPS, GASKET, ASTRAGALS

- A. Acceptable manufacturers and respective catalog numbers:

<u>Description</u>	<u>Reese</u>	<u>Pemko</u>	<u>National Guard</u>
Threshold	S205	171A	425A
Sweep	323	315N	200N
Sweep	967	18133CP	OV633
Weatherstrip	970	45100CP	603
Weatherstrip	DS78	315CR	130N
Gasket	797B	S88	1010

B. Where specified in groups, furnish the above products unless otherwise detailed.

2.12 DOOR HARDWARE FINISHES

A. Unless indicated otherwise in the groups provide finishes as follows:

- | | |
|------------------------------------|-------------------------|
| 1. Hinges, exterior: | US32D |
| 2. Hinges, interior: | US26D |
| 3. Flush Bolts: | US26D |
| 4. Exit Devices: | US32D |
| 5. Locks and Latches: | US26D |
| 6. Pulls, Pushbars, Push/Pull: | US32D |
| 7. Door Closers: | Painted Aluminum |
| 8. Low Energy Automatic Operators: | Painted Aluminum |
| 9. Protective Plates: | US32D |
| 10. Overhead Stops: | Painted Aluminum |
| 11. Wall Stops: | US32D |
| 12. Gasket: | Black |
| 13. Thresholds: | Mill Aluminum |
| 14. Weatherstrip, Sweeps: | Clear Anodized Aluminum |

2.13 KEYING

- A. The Hardware Supplier, in consultation with the Owner's authorized representative, shall prepare a detailed keying schedule. A copy of the final approved keying schedule bearing the signature of approval of the Owner's Representative shall be filed with the Architect. All locks shall be keyed into the same system as is used on the existing building.
- B. Key locks in sets or subsets, master key and grand master key as directed by Owner.
- C. Furnish the required number of keys for each keyed group in quantity as directed by the Owner.
- D. Grand master and master keys shall be delivered by registered mail direct from the manufacturer to the Owner.

PART 3: EXECUTION

3.01 EXAMINATION

- A. Examine doors, frames, and related items for conditions that would prevent the proper application of finish hardware. Do not proceed until defects are corrected.

3.02 INSTALLATION

- A. Install each hardware item in strict compliance with the manufacturer's printed instructions and recommendations, using only fasteners supplied by, or called for by the manufacturer.
- B. Set units level, plumb and true to the line and location. Prepare and reinforce the attachment substrate as necessary for proper installation and operation.
- C. Mortise and cut to close tolerance and conceal evidence of cutting in the finished work. Drill and countersink units which are not factory prepared for anchorage fasteners.
- D. If manufacturer's instructions do not call out a mounting location, refer to the Door and Hardware Institute's publication *Recommended Locations for Architectural Hardware*.
- E. Deliver to the Owner one (1) complete set of installation and adjustment instructions, as well as all tools that were furnished with the hardware.

3.03 ADJUSTMENT AND CLEANING

- A. At final completion, adjust and check each operating item of hardware at each door to ensure proper operation and function of every unit. Lubricate any moving parts that do not operate freely, smoothly, and quietly using only lubricant as recommended by the manufacturer of the hardware item. Replace units that cannot be adjusted or lubricated to operate properly.
- B. Instruct the Owner's personnel in the proper adjustments of the hardware as needed.
- C. Clean and restore hardware to the original finish.

3.04 HARDWARE SCHEDULE

FOREST PARK WINDOW REPLACEMENT

HARDWARE GROUP 1

EACH SINGLE PATIO SLIDING DOOR TO HAVE:
DR.103

ALL HARDWARE BY SLIDING DOOR MANUFACTURER

HARDWARE GROUP 2

EACH SINGLE ALUM DOOR TO HAVE:
DR.117.1

1 EA CONTINUOUS HINGE	BY ALUM FRAME/DR SUPPLIER	
1 EA PUSH/PULL COMBO	BF15747 US32D	ROCKWOOD
1 EA AUTO OPERATOR	D-4990 689	STANLEY
1 EA NARROW WIRELESS ACTUATOR	8310-3818TWS	LCN
1 EA WIDE WIRELESS ACTUATOR	8310-3856WS	LCN
1 EA RECIEVER	8310-865	LCN
1 EA THRESHOLD	S425A40	REESE
1 EA SWEEP AND WEATHERSTRIP	BY ALUM SUPPLIER	

HARDWARE GROUP 3

EACH SINGLE ALUM DOOR TO HAVE:
DR.117.2

1 EA CONTINUOUS HINGE	BY ALUM FRAME/DR SUPPLIER	
1 EA EXIT DEVICE	2103 X CA03 626W or 630	PRECISION
1 EA RIM CYLINDER	12E72 626	BEST
1 EA OFFSET PULL	BF157 US32D	ROCKWOOD
1 EA AUTO OPERATOR	D-4990 689	STANLEY
1 EA NARROW WIRELESS ACTUATOR	8310-3818TWS	LCN
1 EA RECIEVER	8310-865	LCN
1 EA ELECTRIC STRIKE	6300 US32D	VONDUPRIN
1 EA LATCH GUARD	LG1 US32D	IVES
1 EA THRESHOLD	S425A40	REESE
1 EA SWEEP AND WEATHERSTRIP	BY ALUM SUPPLIER	

REUSE EXISTING KEYSWITCH AND BOX AND REHOOK TO NEW AUTO OPERATOR AND ELECTRIC STRIKE. UTILIZE EXISTING POWER SUPPLY TO POWER NEW ELEC STRIKE.

HARDWARE GROUP 4

EACH SINGLE ALUM DOOR TO HAVE:
DR.H100

1 EA CONTINUOUS HINGE	BY ALUM FRAME/DR SUPPLIER	
1 EA EXIT DEVICE	2103 X CA03 626W or 630	PRECISION
1 EA RIM CYLINDER	12E72 626	BEST
1 EA OFFSET PULL	BF157 US32D	ROCKWOOD
1 EA AUTO OPERATOR	D-4990 689	STANLEY
1 EA WIDE WIRELESS ACTUATOR	8310-3856WS	LCN
1 EA RECIEVER	8310-865	LCN
1 EA ELECTRIC STRIKE	6300 US32D	VONDUPRIN
1 EA LATCH GUARD	LG1 US32D	IVES
1 EA THRESHOLD	S425A40	REESE
1 EA SWEEP AND WEATHERSTRIP	BY ALUM SUPPLIER	

REUSE EXISTING KEYSWITCH AND BOX AND REHOOK TO NEW AUTO OPERATOR AND ELECTRIC STRIKE. UTILIZE EXISTING POWER SUPPLY TO POWER NEW ELEC STRIKE.

HARDWARE GROUP 5

EACH PAIR OF FRP/ALUM DOORS TO HAVE:
DR.125.1/125.2

8 EA HINGES	FBF199 4.5 X 4.5 630 NRP	STANLEY
1 EA STOREROOM LOCK	9K37D15D S3 626	BEST
2 EA CLOSER	QDC120 689	STANLEY
2 EA DROP PLATE	8QOO470 689	STANLEY
2 EA BLADE STOP	4110-30 689	LCN
2 EA CUSH SHOE SUPPORT	4110-61 689	LCN
2 EA FLUSHBOLTS(1 W/24" TOP ROD)	FB458 26D	IVES
1 EA DUST PROOF STRIKE	DP2 626	IVES
1 EA LATCH GUARD	320CXL US32D	ROCKWOOD
2 EA BRUSH ASTRAGALS	964C96	REESE
2 EA SWEEPS	323C40	REESE
1 EA THRESHOLD	S425A80	REESE
1 EA WEATHERSTRIP	BY ALUM FR SUPPLIER	

HARDWARE GROUP 6

EACH PAIR OF FRP/ALUM DOORS TO HAVE:
DR.1001.1/1001.2

6 EA HINGES	FBF199 4.5 X 4.5 630 NRP	STANLEY
1 EA STOREROOM LOCK	9K37D15D S3 626	BEST
2 EA CLOSER	QDC120 689	STANLEY
2 EA DROP PLATE	8QOO470 689	STANLEY
2 EA BLADE STOP	4110-30 689	LCN
2 EA CUSH SHOE SUPPORT	4110-61 689	LCN
2 EA SURFACE BOLTS	SB453US26D-8-TB	IVES
1 EA LATCH GUARD	320CXL US32D	ROCKWOOD
2 EA BRUSH ASTRAGALS	964C80	REESE
2 EA SWEEPS	323C24	REESE
1 EA THRESHOLD	S425A48	REESE
1 EA WEATHERSTRIP	BY ALUM FR SUPPLIER	

HARDWARE GROUP 7

EACH SINGLE FRP/ALUM DOOR TO HAVE:
DR.A.1, B, C

4 EA HINGES	FBF199 4.5 X 4.5 630 NRP	STANLEY
1 EA STOREROOM LOCK	9K37D15D S3 626	BEST
1 EA CLOSER	QDC119 689	STANLEY
1 EA DROP PLATE	8QOO470 689	STANLEY
1 EA BLADE STOP	4110-30 689	LCN
1 EA CUSH SHOE SUPPORT	4110-61 689	LCN
1 EA LATCH GUARD	320CXL US32D	ROCKWOOD
1 EA SWEEPS	323C40	REESE
1 EA THRESHOLD	S425A40	REESE
1 EA WEATHERSTRIP	BY ALUM FR SUPPLIER	

HARDWARE GROUP 8

EACH SINGLE FRP/ALUM DOOR TO HAVE:
DR.A.2

4 EA HINGES	FBF199 4.5 X 4.5 630 NRP	STANLEY
1 EA STOREROOM LOCK	9K37D15D S3 626	BEST
1 EA CLOSER	QDC119 689	STANLEY
1 EA DROP PLATE	8QOO470 689	STANLEY
1 EA BLADE STOP	4110-30 689	LCN
1 EA CUSH SHOE SUPPORT	4110-61 689	LCN
1 EA LATCH GUARD	320CXL US32D	ROCKWOOD
1 EA WEATHERSTRIP(4 SIDES)	BY ALUM FR SUPPLIER	

HARDWARE GROUP 9

EACH SINGLE ALUM DOOR TO HAVE:
DR.H101

1 EA CONTINUOUS HINGE	BY ALUM FRAME/DR SUPPLIER	
1 EA EXIT DEVICE	2103 X CA03 626W or 630	PRECISION
1 EA RIM CYLINDER	12E72 626	BEST
1 EA OFFSET PULL	BF157 US32D	ROCKWOOD
1 EA CLOSER	QDC119 689	STANLEY
1 EA DROP PLATE	8QOO470 689	STANLEY
1 EA BLADE STOP	4110-30 689	LCN
1 EA CUSH SHOE SUPPORT	4110-61 689	LCN
1 EA LATCH GUARD	LG1 US32D	IVES
1 EA THRESHOLD	S425A40	REESE
1 EA SWEEP AND WEATHERSTRIP	BY ALUM SUPPLIER	

END OF SECTION 08 71 00

Page Intentionally Left Blank

SECTION 09 91 23
INTERIOR PAINTING

PART 1 GENERAL

1.01 SECTION INCLUDES

- A. Surface preparation.
- B. Field application of paints.
- C. Materials for backpriming woodwork.
- D. Scope: Finish interior surfaces exposed to view that are noted in the drawings for paint finish and adjacent surfaces that require touchup due to the work of this project.
 - 1. Including: Sheet good jambs, trim, gypsum board panel products, lintels and painted concrete floor at thresholds.
- E. Do Not Paint or Finish the Following Items:
 - 1. Items factory-finished unless otherwise indicated; materials and products having factory-applied primers are not considered factory finished.
 - 2. Items indicated to receive other finishes.
 - 3. Items indicated to remain unfinished.
 - 4. Fire rating labels, equipment serial number and capacity labels, bar code labels, and operating parts of equipment.
 - 5. Stainless steel, anodized aluminum, bronze, terne-coated stainless steel, and lead items.
 - 6. Marble, granite, slate, and other natural stones.
 - 7. Floors, unless specifically indicated.
 - 8. Ceramic and other tiles.
 - 9. Brick, architectural concrete, cast stone, integrally colored plaster, and stucco.
 - 10. Glass.
 - 11. Concrete masonry units in utility, mechanical, and electrical spaces.
 - 12. Acoustical materials, unless specifically indicated.
 - 13. Concealed pipes, ducts, and conduits.

1.02 RELATED REQUIREMENTS

- A. Section 06 20 00- Finish Carpentry: Architectural woodwork to be painted.
- B. Section 09 91 13 - Exterior Painting.

1.03 DEFINITIONS

- A. Comply with ASTM D16 for interpretation of terms used in this section.

1.04 REFERENCE STANDARDS

- A. 40 CFR 59, Subpart D - National Volatile Organic Compound Emission Standards for Architectural Coatings; U.S. Environmental Protection Agency; current edition.
- B. ASTM D16 - Standard Terminology for Paint, Related Coatings, Materials, and Applications; 2016.
- C. ASTM D4258 - Standard Practice for Surface Cleaning Concrete for Coating; 2005 (Reapproved 2012).
- D. SSPC-SP 1 - Solvent Cleaning; 2015.
- E. SSPC-SP 2 - Hand Tool Cleaning; 1982 (Ed. 2004).

1.05 SUBMITTALS

- A. See General Requirements for submittal procedures.
- B. Provide submittal transmittals that include all submittal items identified in each submittal group below.
- C. Review Submittals - Preparatory
 - 1. Product Data: Provide complete list of products to be used, with the following information for each:
 - a. Manufacturer's name, product name and/or catalog number, and general product category (e.g., "alkyd enamel").
 - b. Cross-reference to specified paint system(s) product is to be used in; include description of each system.
 - c. Manufacturer's installation instructions.
 - d. If proposal of substitutions is allowed under submittal procedures, explanation of substitutions proposed.

- D. Review Submittals - Samples
 - 1. Samples: Submit three paper "draw down" samples, 8-1/2 by 11 inches in size, illustrating range of colors available for each finishing product specified.
 - a. Where sheen is specified, submit samples in only that sheen.
 - b. Where sheen is not specified, discuss sheen options with Architect before preparing samples, to eliminate sheens not required.
- E. Information Submittals - Preparatory
 - 1. Certification: By manufacturer that paints and finishes comply with VOC limits specified.
 - 2. Manufacturer's Instructions: Indicate special surface preparation procedures.
- F. Closeout Submittals
 - 1. Maintenance Data: Submit data including finish schedule showing where each product/color/finish was used, product technical data sheets, material safety data sheets (MSDS), care and cleaning instructions, touch-up procedures, repair of painted and finished surfaces, and color samples of each color and finish used.
- G. Maintenance Materials
 - 1. Maintenance Materials: Furnish the following for Owner's use in maintenance of project.
 - a. See Section 01 60 00 - Product Requirements, for additional provisions.
 - b. Extra Paint and Finish Materials: 1 gallon of each color; from the same product run, store where directed.
 - c. Label each container with color in addition to the manufacturer's label.

1.06 DELIVERY, STORAGE, AND HANDLING

- A. Deliver products to site in sealed and labeled containers; inspect to verify acceptability.
- B. Container Label: Include manufacturer's name, type of paint, brand name, lot number, brand code, coverage, surface preparation, drying time, cleanup requirements, color designation, and instructions for mixing and reducing.
- C. Paint Materials: Store at minimum ambient temperature of 45 degrees F and a maximum of 90 degrees F, in ventilated area, and as required by manufacturer's instructions.

1.07 FIELD CONDITIONS

- A. Do not apply materials when surface and ambient temperatures are outside the temperature ranges required by the paint product manufacturer.
- B. Follow manufacturer's recommended procedures for producing best results, including testing of substrates, moisture in substrates, and humidity and temperature limitations.
- C. Do not apply materials when relative humidity exceeds 85 percent, at temperatures less than 5 degrees F above the dew point, or to damp or wet surfaces.
- D. Minimum Application Temperatures for Paints: 50 degrees F for interiors unless required otherwise by manufacturer's instructions.
- E. Provide lighting level of 80 ft candles measured mid-height at substrate surface.

PART 2 PRODUCTS

2.01 MANUFACTURERS

- A. Provide paints and finishes used in any individual system from the same manufacturer; no exceptions.
- B. Paints:
 - 1. Halman-Lindsay (HL): www.hallmanlindsay.com
 - 2. Behr Process Corporation: www.behr.com/#sle.
 - 3. Benjamin Moore: www.benjaminmoore.com
 - 4. Diamond Vogel Paints: www.diamondvogel.com/#sle.
 - 5. PPG Paints: www.ppgpaints.com/#sle.
 - 6. Pratt & Lambert Paints: www.prattandlambert.com/#sle.
 - 7. Sherwin-Williams Company: www.sherwin-williams.com/#sle.
- C. Substitutions: See Section 01 60 00 - Product Requirements.

2.02 PAINTS AND FINISHES - GENERAL

- A. Paints and Finishes: Ready-mixed, unless intended to be a field-catalyzed paint.
 - 1. Provide paints and finishes of a soft paste consistency, capable of being readily and uniformly dispersed to a homogeneous coating, with good flow and brushing properties, and capable of drying or curing free of streaks or sags.
 - 2. Provide materials that are compatible with one another and the substrates indicated under conditions of service and application, as demonstrated by manufacturer based on testing and field experience.
 - 3. For opaque finishes, tint each coat including primer coat and intermediate coats, one-half shade lighter than succeeding coat, with final finish coat as base color.
 - 4. Supply each paint material in quantity required to complete entire project's work from a single production run.
 - 5. Do not reduce, thin, or dilute paint or finishes or add materials unless such procedure is specifically described in manufacturer's product instructions.
 - 6. Paint for insulated piping shall be latex based. If the insulation taping is rippled due to oil based application, the Painter shall be responsible for replacement of the insulation. Certain Class A, non-combustible paints may maintain a 25/50 smoke rating for the painted pipe insulation, PVC jacketing and fittings. Check with state and local building codes and fire marshal for approved practice before painting.
- B. Volatile Organic Compound (VOC) Content:
 - 1. Provide paints and finishes that comply with the most stringent requirements specified in the following:
 - a. 40 CFR 59, Subpart D--National Volatile Organic Compound Emission Standards for Architectural Coatings.
 - 2. Determination of VOC Content: Testing and calculation in accordance with 40 CFR 59, Subpart D (EPA Method 24), exclusive of colorants added to a tint base and water added at project site; or other method acceptable to authorities having jurisdiction.
- C. Flammability: Comply with applicable code for surface burning characteristics.
- D. Sheens: Provide the sheens specified; where sheen is not specified, sheen will be selected later by Architect from the manufacturer's full line.
- E. Colors: As shown in master color schedule and below..
 - 1. Allow for minimum of three colors for each system, unless otherwise indicated, without additional cost to Owner.
 - 2. Extend colors to surface edges; colors may change at any edge as directed by Architect.

2.03 PAINT SYSTEMS - INTERIOR

- A. IPS 1 Wood (i.e. trim): 100% Acrylic Latex, Satin/Semi-gloss, Non-blocking
 - 1. (SW) One coat Premium Interior Wall and Wood Primer B28W8111 and two coats ProClassic Waterborne Acrylic, Semi-Gloss B31-1100 Series.
 - 2. (HL) One coat Aqua Kote Enamel Undercoater 231 and two coats Duratech 100% Acrylic Satin Enamel 318.
- B. IPS 11 Concrete: Latex Eggshell
 - 1. (SW) One coat Loxon Concrete and Masonry Primer LX2W50, two coats ProMar 200 0 VOC Latex Eg-Shel, B20W12600 Series.
 - 2. (HL) One coat Grip Tite Masonry/Plaster Primer 166, two coats Pro Kote Interior Latex Zero VOC Eggshell 284.
- C. IPS 14 Gypsum Board: Vinyl Acrylic Latex Eggshell over Vinyl Acrylic Primer
 - 1. (SW) One coat ProMar 200 Zero VOC Interior Latex primer B28W02600 Series. two coats ProMar 200 Zero VOC Interior Latex Low Gloss Eg-Shel B41-2600 Series.
 - 2. (HL) One coat Pro Wall Primer Zero VOC 227, two coats Pro Kote Interior Latex Zero VOC Eggshell 284.
- D. IPS 24 Existing Painted Gypsum Board: Vinyl Acrylic Latex Eggshell Over Existing Paint
 - 1. (SW) One coat Extreme Bond Interior/Exterior Bonding Primer B51W00150 Series, two coats ProMar 200 Zero VOC Interior Latex Low Gloss Eg-Shel, B41-2600 Series.

2. (HL) One coat Stainguard 100% Acrylic Primer 526, two coats Pro Kote Interior Latex Zero VOC Eggshell 284.
- E. IPS 29 Concrete Floor Paint: Water Based Epoxy
 1. Sherwin Williams-Armorseal Tred-Plex Water Based Acrylic Floor Coating. B90 W 111, 6405-16837. Existing floor has Sher-Color Formula:
 - a. CCE*Colorant OZ 32 64 128
 - b. B1-Black 4 35 - -
 - c. Y3-Deep Gold - 22 - 1

2.04 ACCESSORY MATERIALS

- A. Accessory Materials: Provide primers, sealers, cleaning agents, cleaning cloths, sanding materials, and clean-up materials as required for final completion of painted surfaces.
- B. Patching Material: Latex filler.
- C. Fastener Head Cover Material: Latex filler.

PART 3 EXECUTION

3.01 EXAMINATION

- A. Do not begin application of paints and finishes until substrates have been adequately prepared.
- B. Verify that surfaces are ready to receive work as instructed by the product manufacturer.
- C. Examine surfaces scheduled to be finished prior to commencement of work. Report any condition that may potentially affect proper application.
- D. If substrate preparation is the responsibility of another installer, notify Architect of unsatisfactory preparation before proceeding.
- E. Test shop-applied primer for compatibility with subsequent cover materials.
- F. Measure moisture content of surfaces using an electronic moisture meter. Do not apply finishes unless moisture content of surfaces is below the following maximums:
 1. Gypsum Wallboard: 12 percent.
 2. Masonry, Concrete, and Concrete Masonry Units: 12 percent.

3.02 PREPARATION

- A. Clean surfaces thoroughly and correct defects prior to application. Fill damaged/indented and holes in all wall surfaces from equipment removal flush with wall surface. Spot prime.
- B. Prepare surfaces using the methods recommended by the manufacturer for achieving the best result for the substrate under the project conditions.
- C. Remove or repair existing paints or finishes that exhibit surface defects.
- D. Remove or mask surface appurtenances, including electrical plates, hardware, light fixture trim, escutcheons, and fittings, prior to preparing surfaces or finishing.
- E. Seal surfaces that might cause bleed through or staining of topcoat.
- F. Remove mildew from impervious surfaces by scrubbing with solution of tetra-sodium phosphate and bleach. Rinse with clean water and allow surface to dry.
- G. Concrete:
 1. Remove release agents, curing compounds, efflorescence, and chalk. Do not coat surfaces if moisture content or alkalinity of surfaces to be coated exceeds that permitted in manufacturer's written instructions.
 2. Clean concrete according to ASTM D4258. Allow to dry.
- H. Gypsum Board: Fill minor defects with filler compound. Spot prime defects after repair.
- I. Wood Surfaces to Receive Opaque Finish: Wipe off dust and grit prior to priming. Seal knots, pitch streaks, and sappy sections with sealer. Fill nail holes and cracks after primer has dried; sand between coats. Back prime concealed surfaces before installation.

3.03 APPLICATION

- A. Apply products in accordance with manufacturer's written instructions.
- B. Where adjacent sealant is to be painted, do not apply finish coats until sealant is applied.
- C. Do not apply finishes to surfaces that are not dry. Allow applied coats to dry before next coat is applied.

- D. Apply each coat to uniform appearance in thicknesses specified by manufacturer.
- E. Dark Colors and Deep Clear Colors: Regardless of number of coats specified, apply as many coats as necessary for complete hide.
- F. Sand wood and metal surfaces lightly between coats to achieve required finish.
- G. Use tack cloth to remove dust and particles just prior to applying next coat.
- H. Reinstall electrical cover plates, hardware, light fixture trim, escutcheons, and fittings removed prior to finishing.

3.04 CLEANING

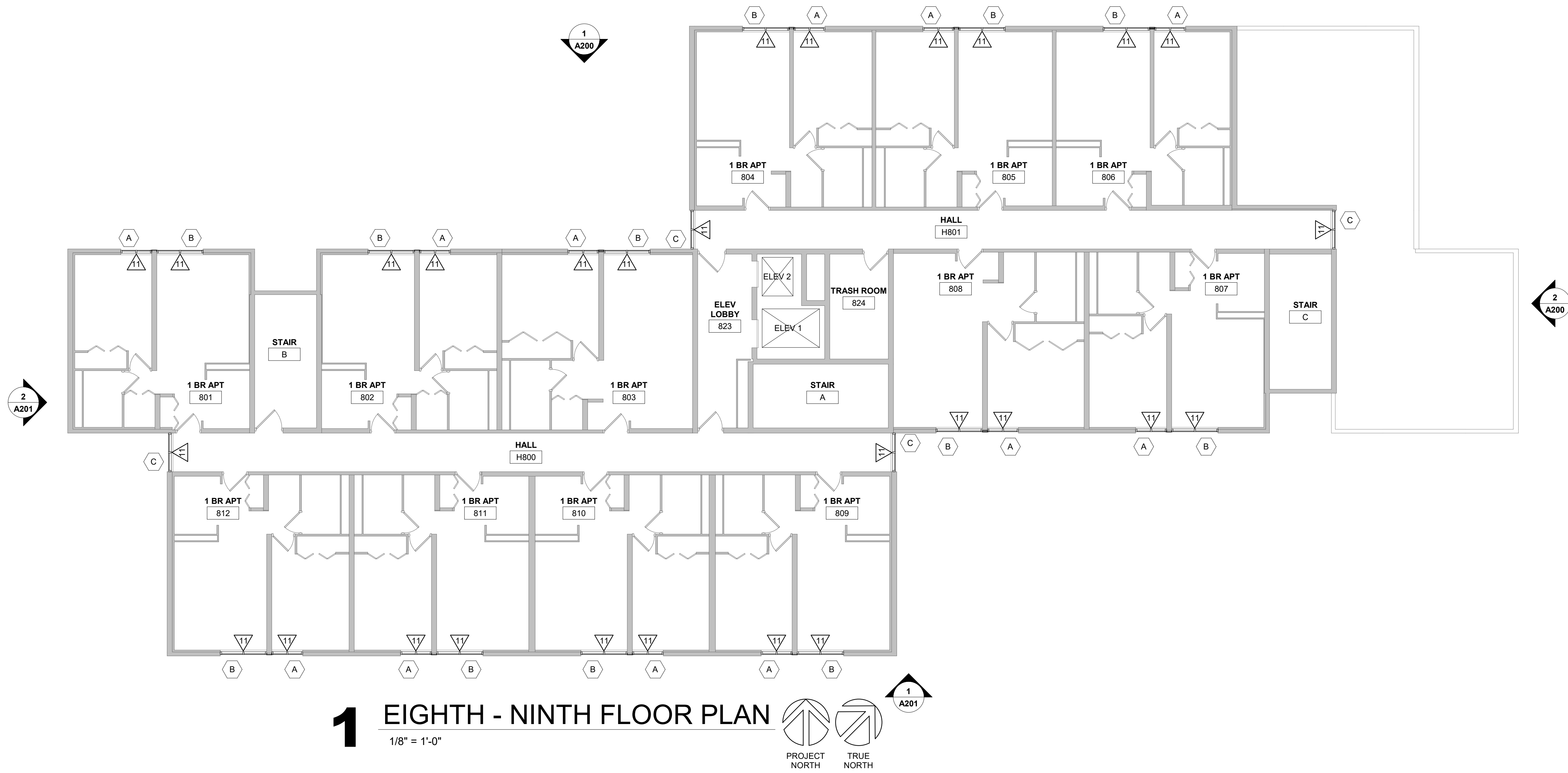
- A. Collect waste material that could constitute a fire hazard, place in closed metal containers, and remove daily from site.

3.05 PROTECTION

- A. Protect finishes until completion of project.
- B. Touch-up damaged finishes after Substantial Completion.

END OF SECTION

Page Intentionally Left Blank



HSR ASSOCIATES INC.
100 MILWAUKEE STREET
LA CROSSE, WISCONSIN
PHONE: 608.784.1830
FAX: 608.782.5844
www.hsrassociates.com

Consultant:

HOUSING AUTHORITY OF THE CITY OF LA CROSSE
FOREST PARK WINDOW REPLACEMENT

Project Location: 1230 BADGER STREET
LA CROSSE, WISCONSIN 54601

EIGHTH-TENTH FLOOR PLANS

Project Title:
HSR Project Number:
Project Date:
Drawn By:
Key Plan:

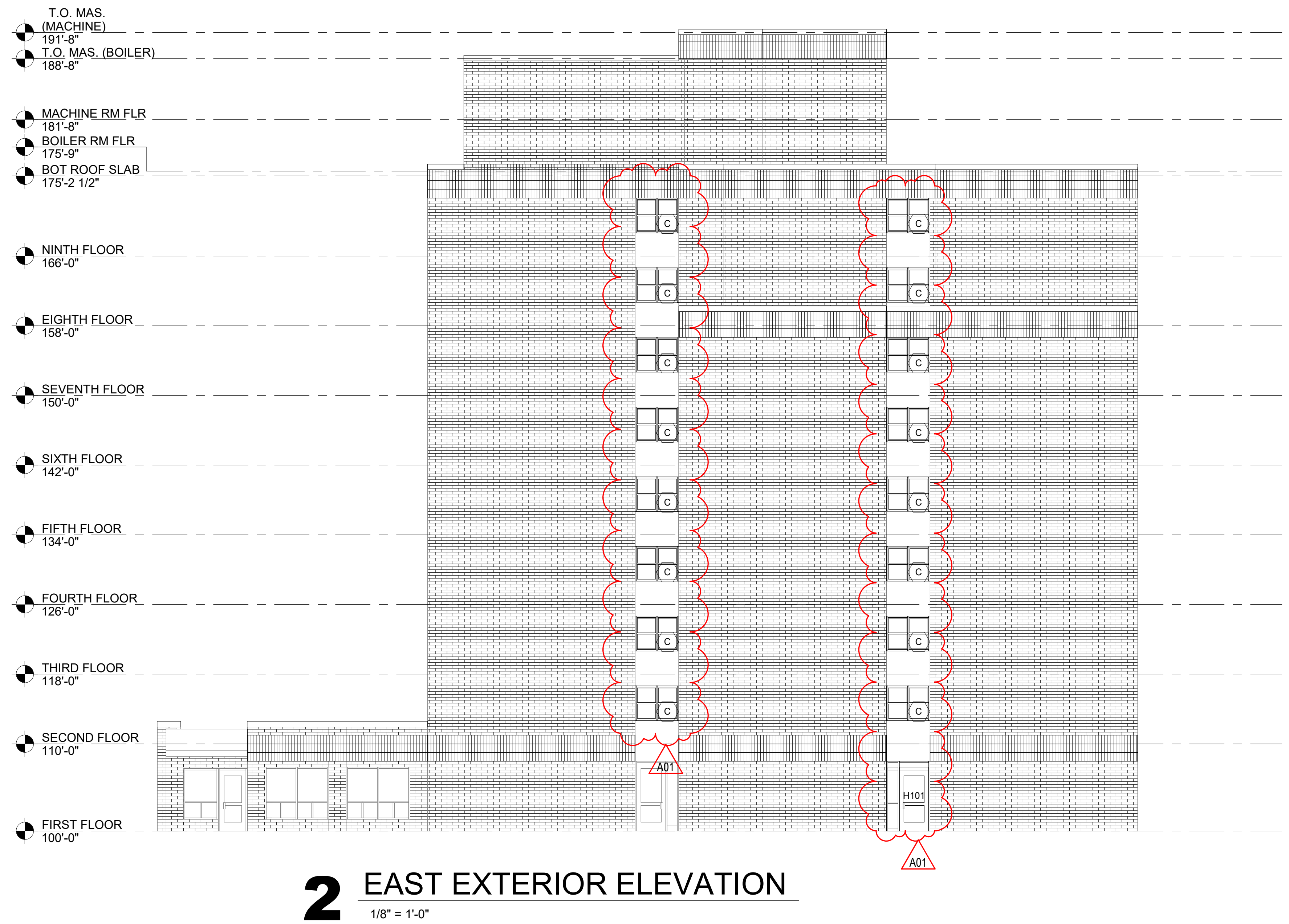
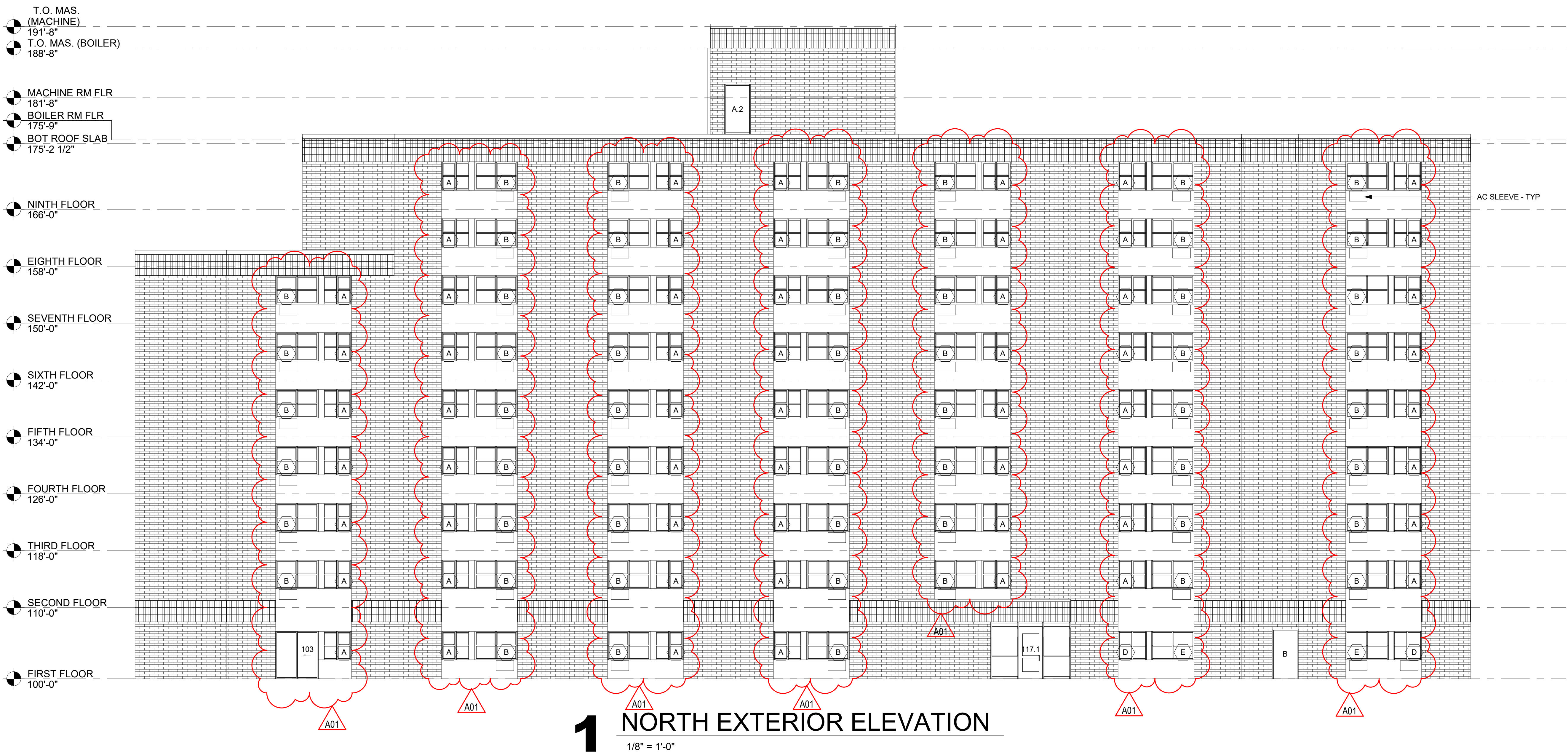
22023
APRIL 2022
JTD

No.	Description	Date
A01	ADDENDUM #1	05/17/2022

Graphic Scale:
VARIES

Last Update:
5/17/2022 3:22:49 PM

A101

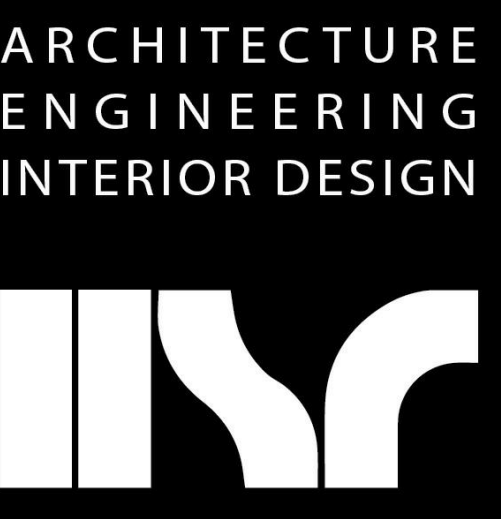


ELEVATION GENERAL NOTES:

A. SEE SHEET A601 FOR WINDOW TYPES.
B. CLEAN, PREP AND PAINT ALL EXPOSED STEEL LINTELS. MATCH EXISTING COLOR.

ELEVATION LEGEND:

WINDOW TAG - SEE SHEET A601 FOR FRAME ELEVATIONS



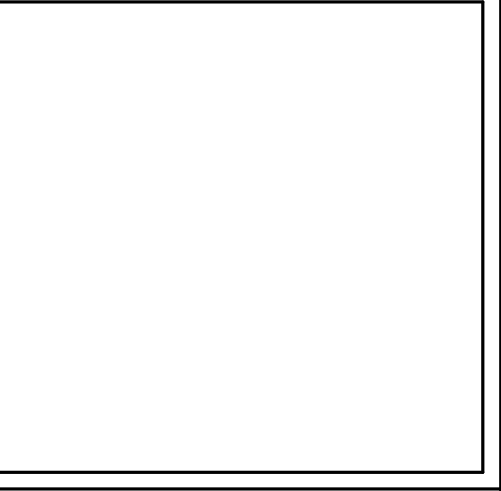
HSR ASSOCIATES INC.
 100 MILWAUKEE STREET
 LA CROSSE, WISCONSIN
 PHONE: 608.784.1830
 FAX: 608.782.5844
 www.hsrassociates.com

Consultant:

Project Title: **HOUSING AUTHORITY OF THE CITY OF LA CROSSE
FOREST PARK WINDOW REPLACEMENT**
 Project Location: **1230 BADGER STREET
LA CROSSE, WISCONSIN 54601**
 Sheet Title: **EXTERIOR ELEVATIONS**

HSR Project Number: **22023**
 Project Date: **APRIL 2022**
 Drawn By: **JTD**
 Key Plan:

Key Plan:



No.	Description	Date
A01	ADDENDUM #1	05/17/2022

Graphic Scale: **VARIES**
 Last Update: **5/17/2022 3:22:50 PM**

A200

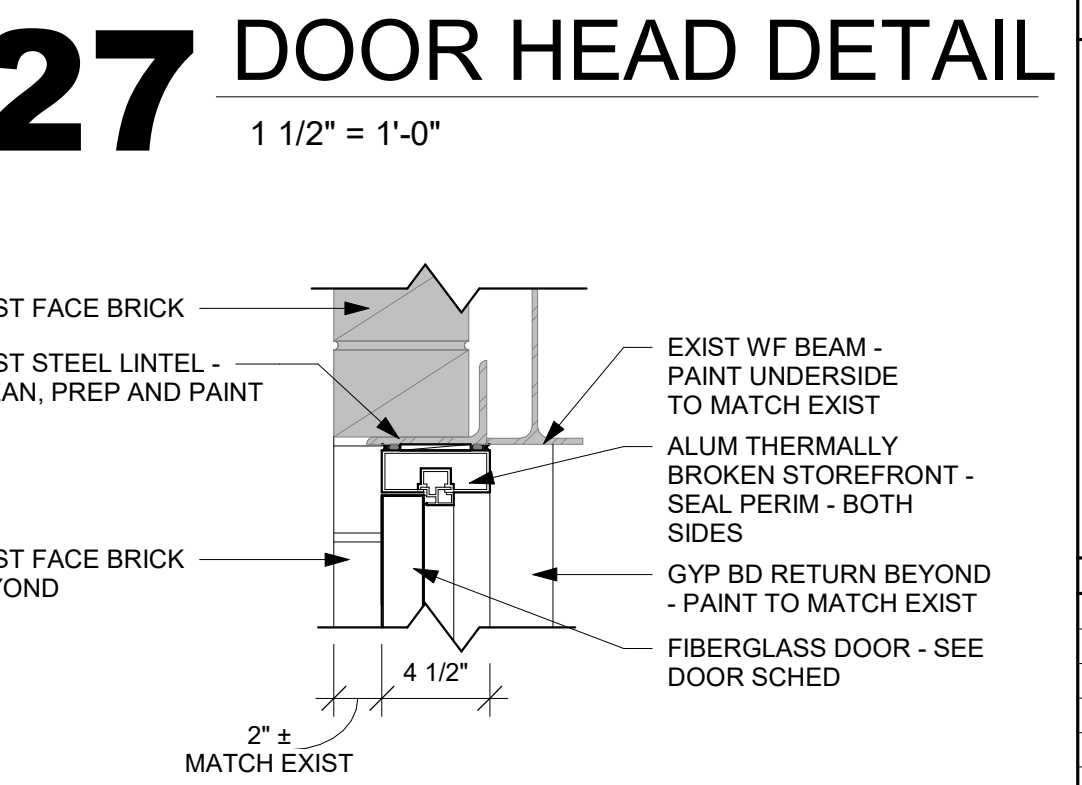
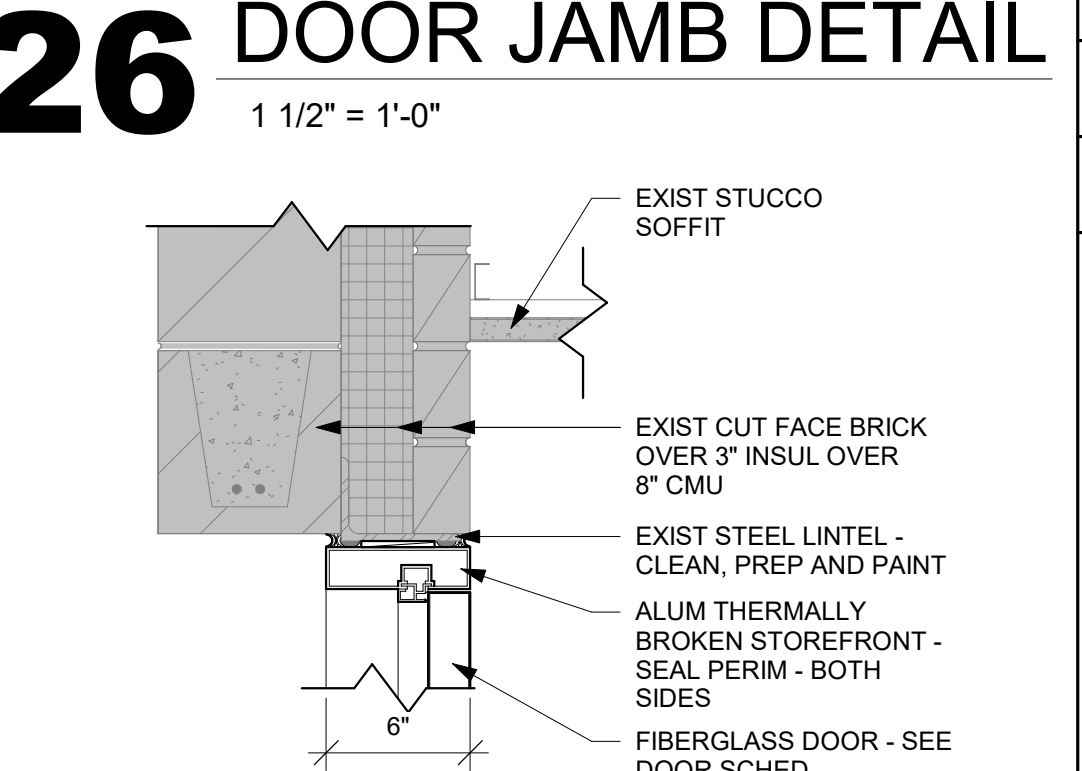
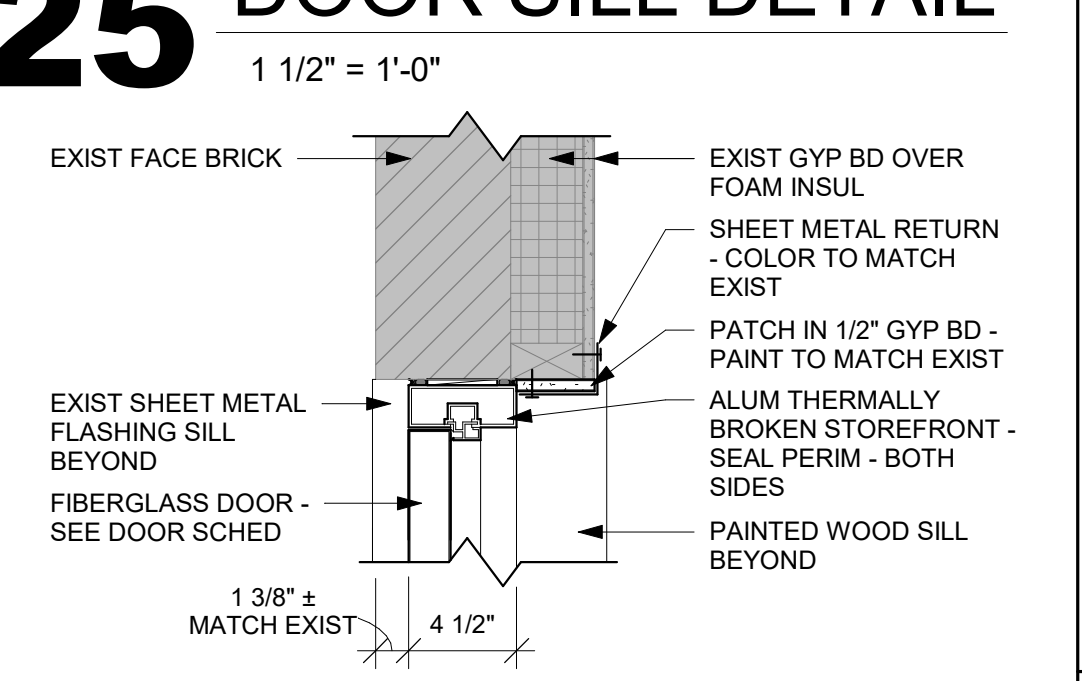
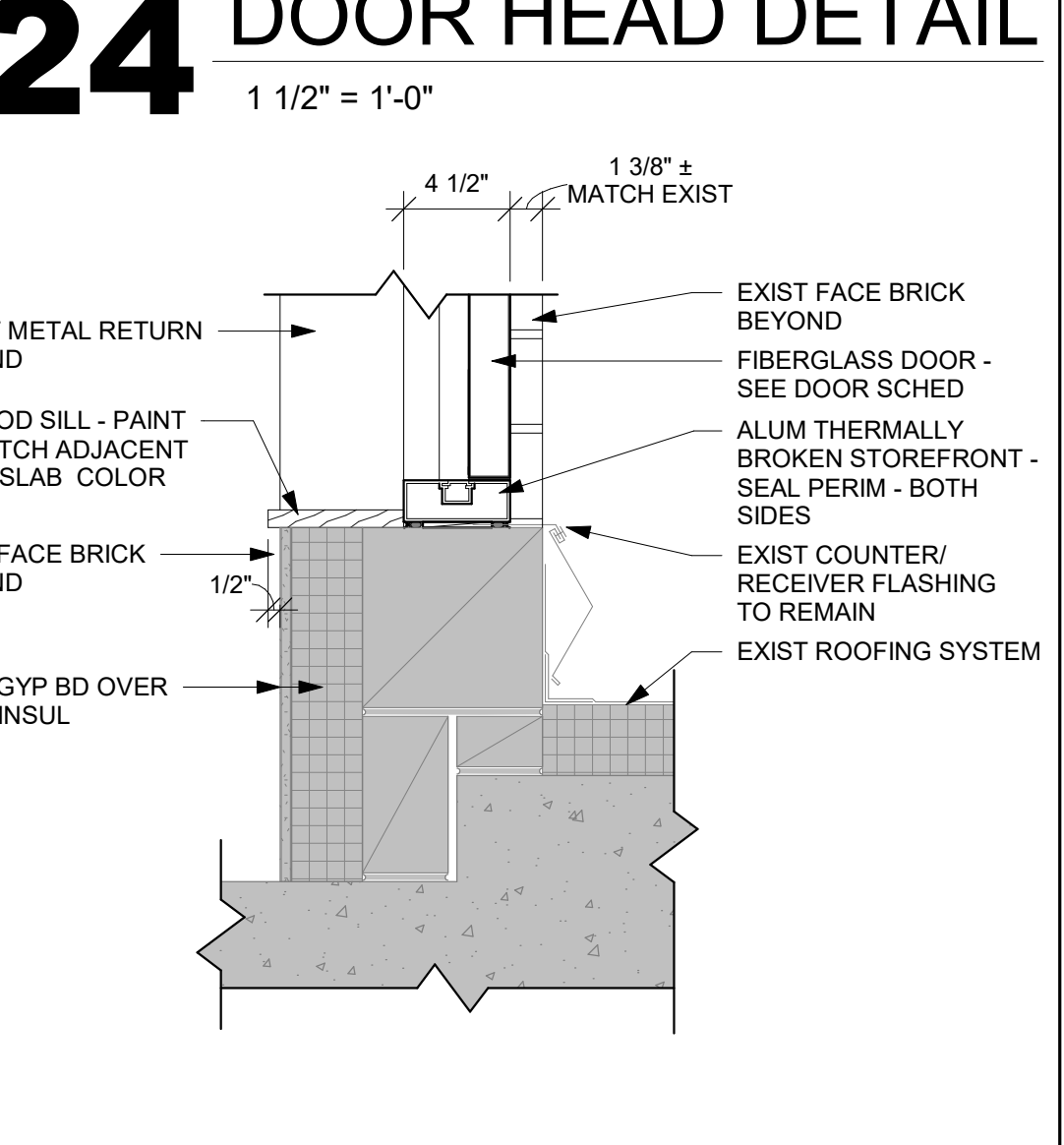
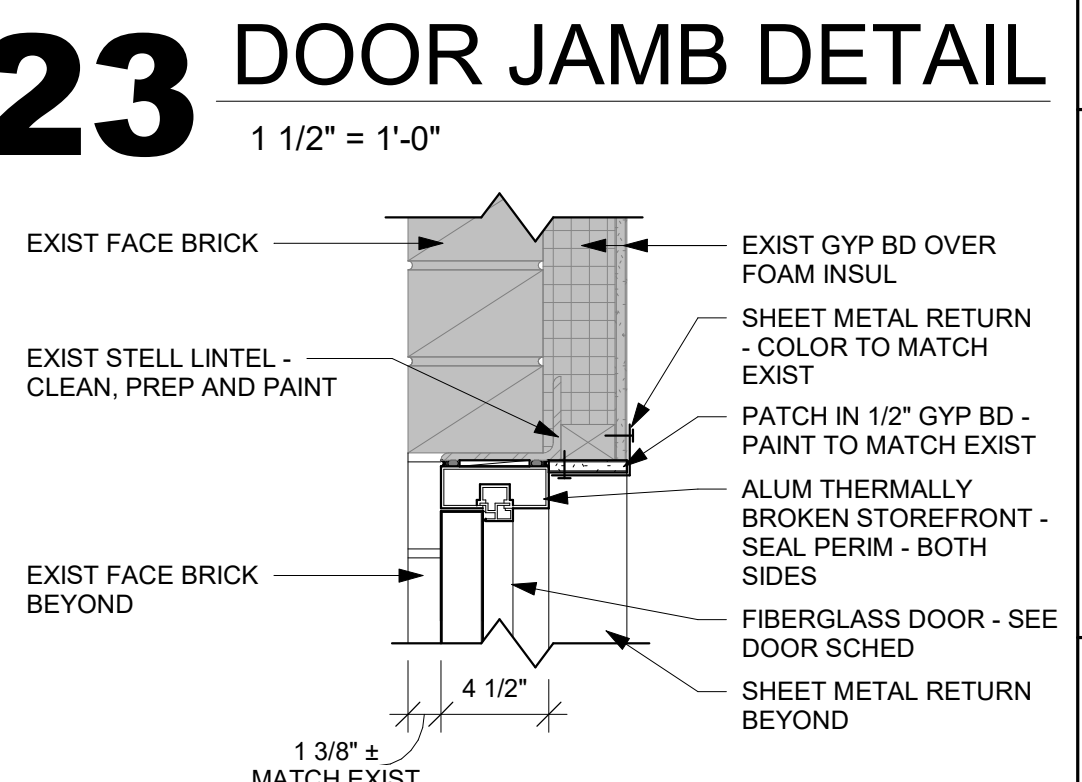
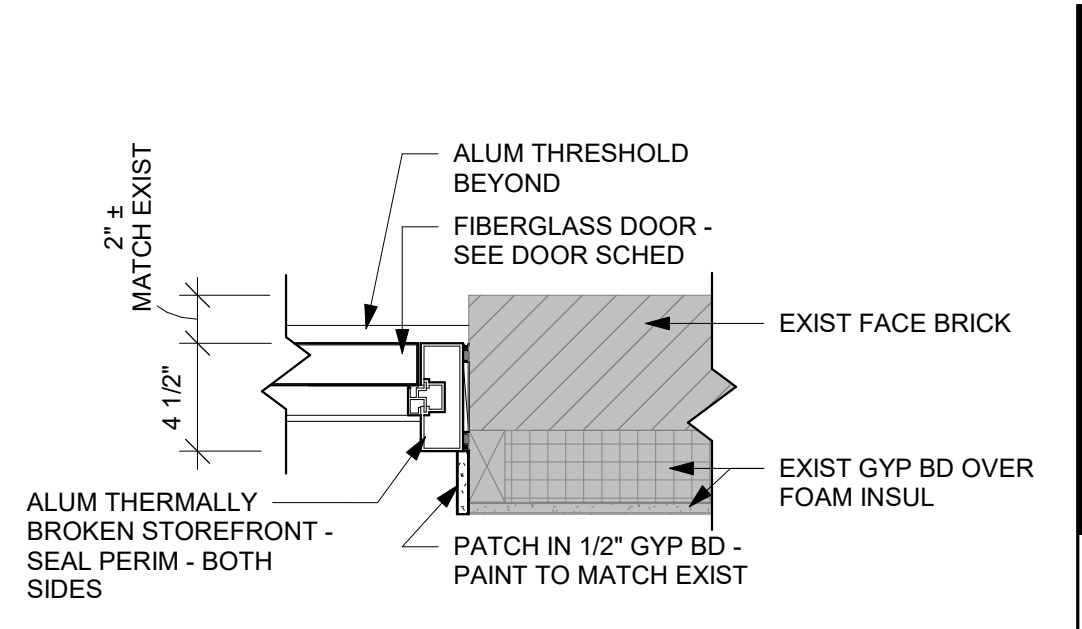
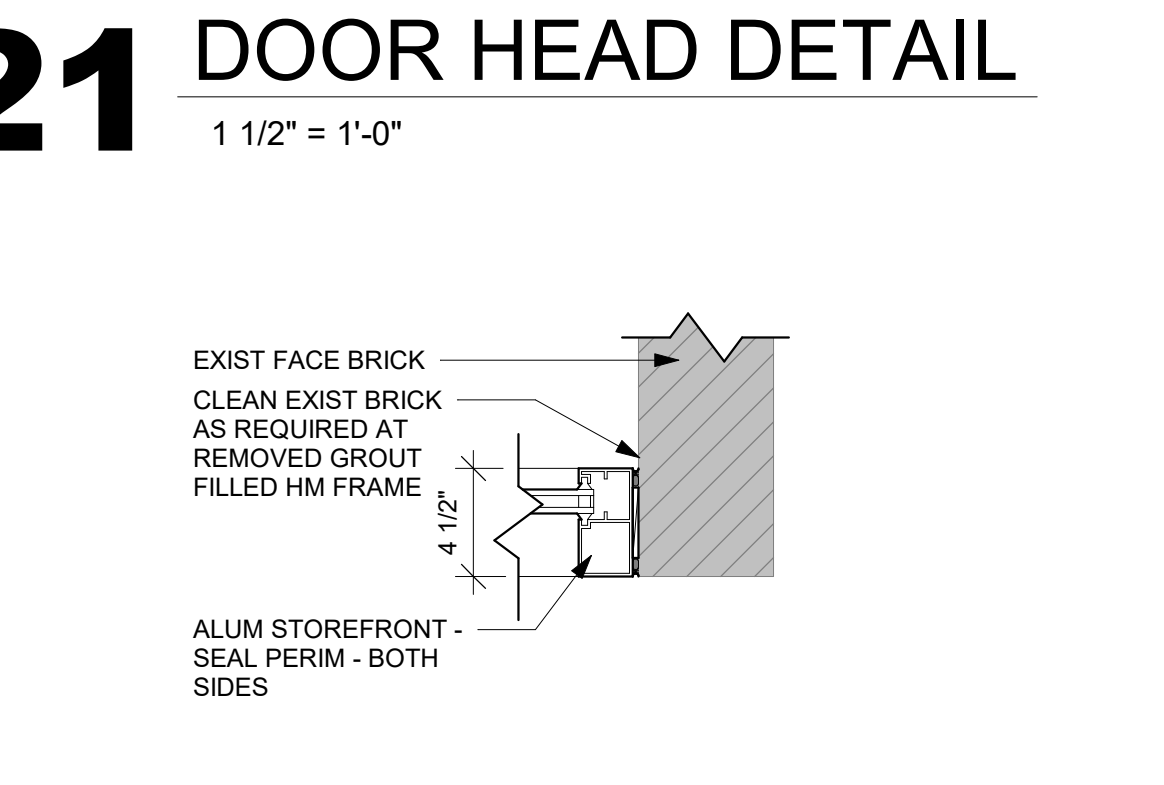
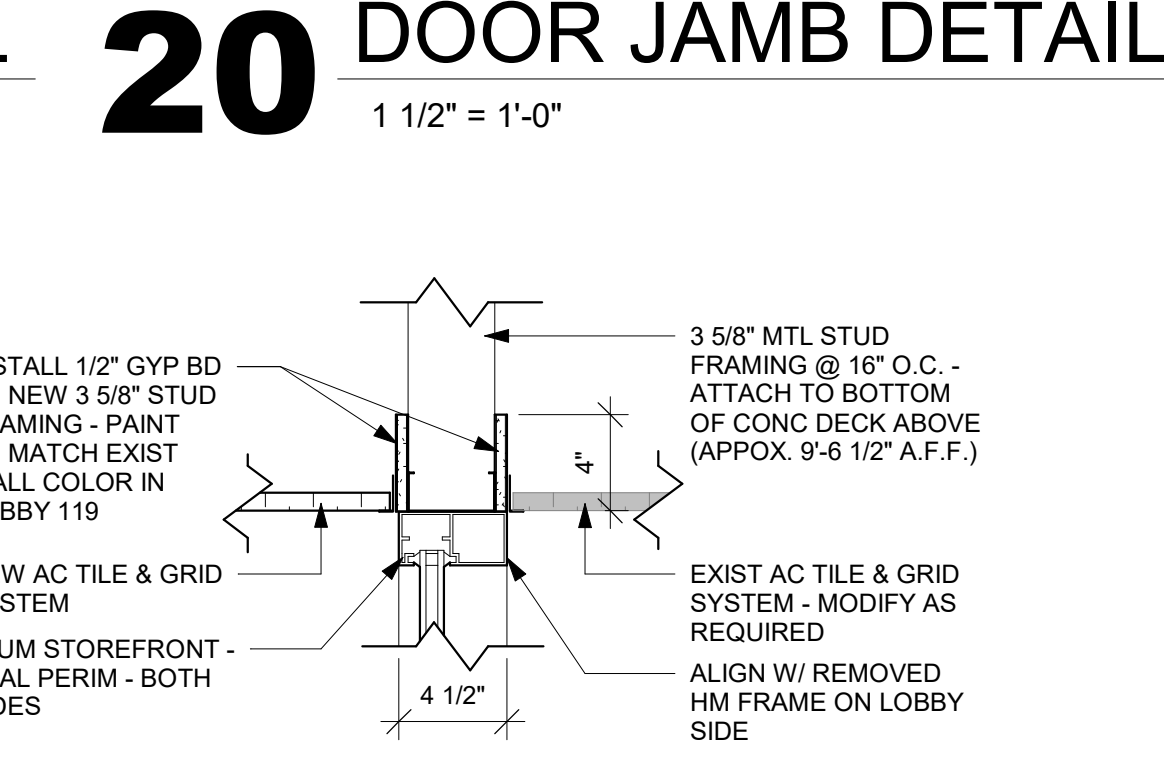
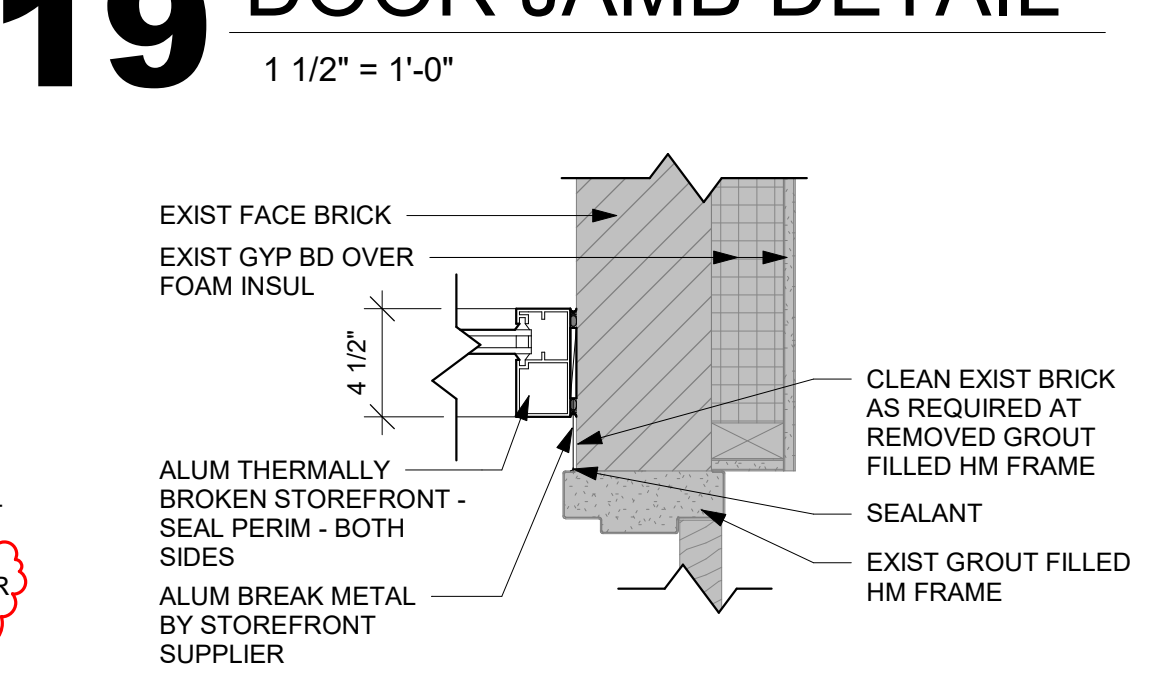
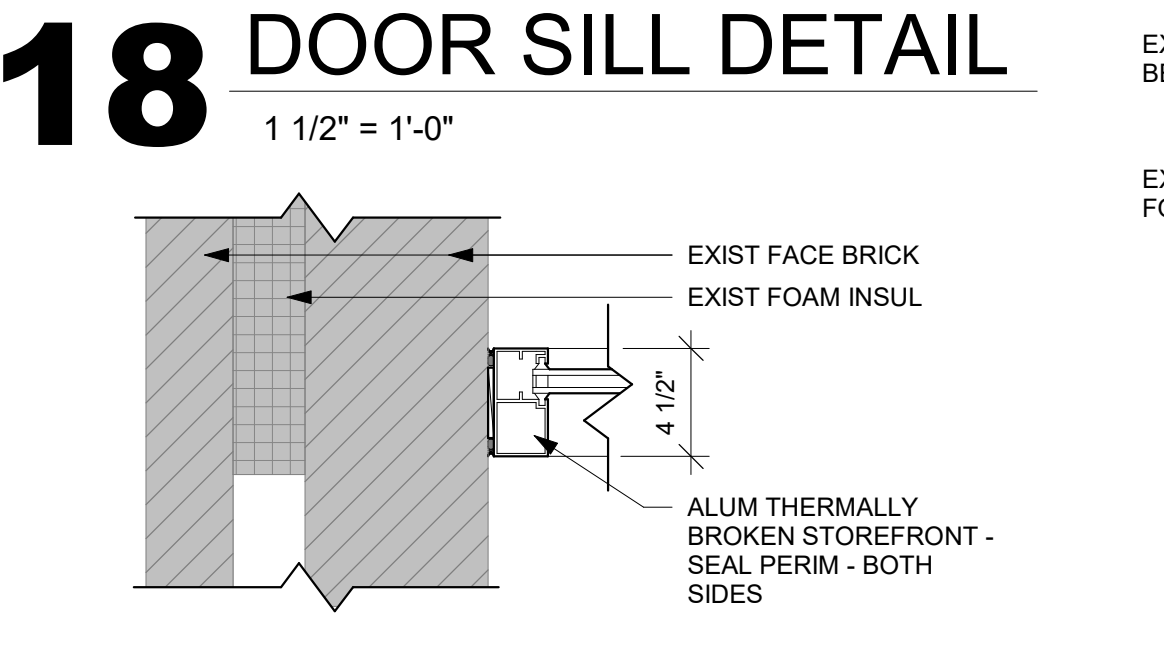
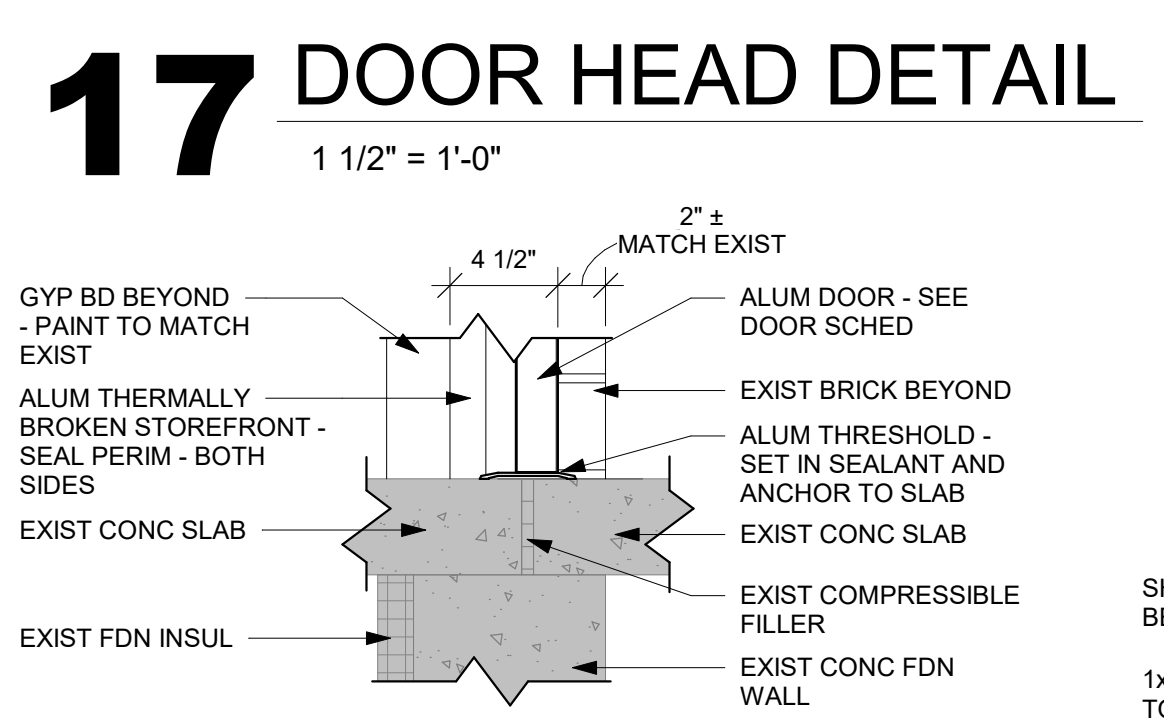
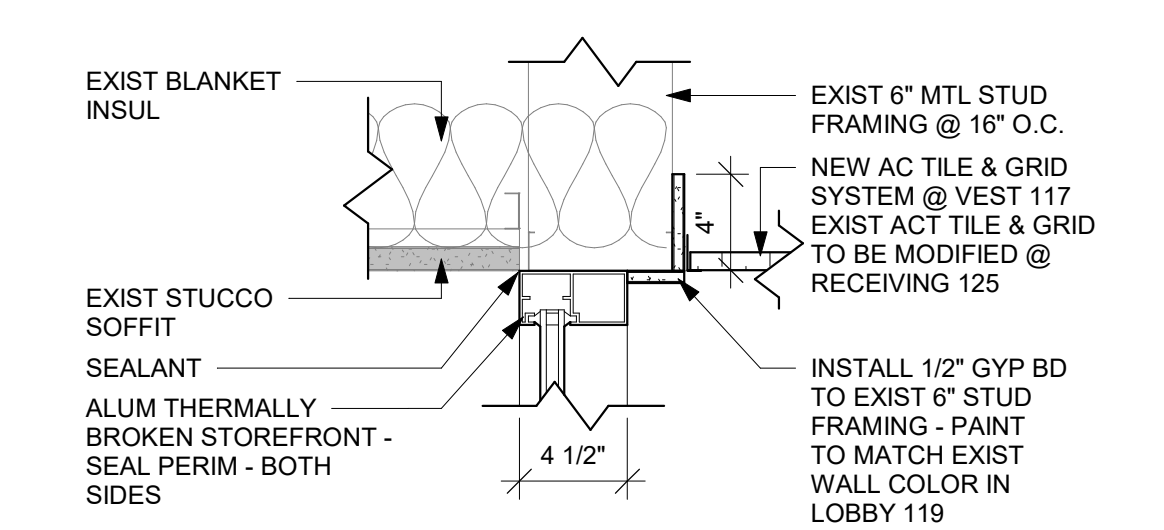
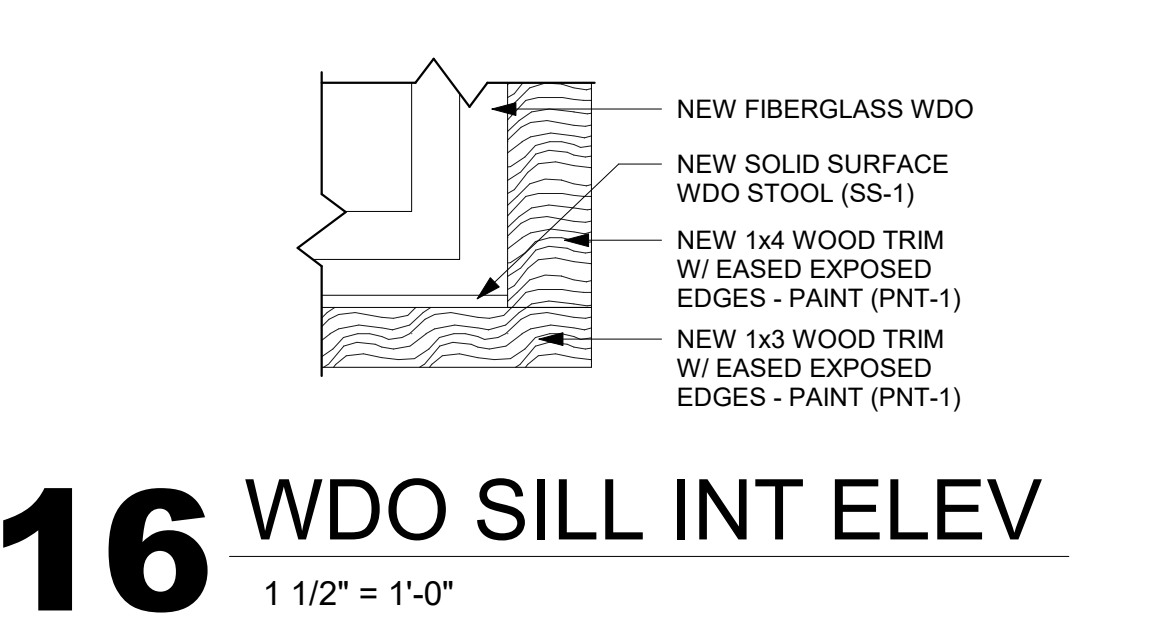
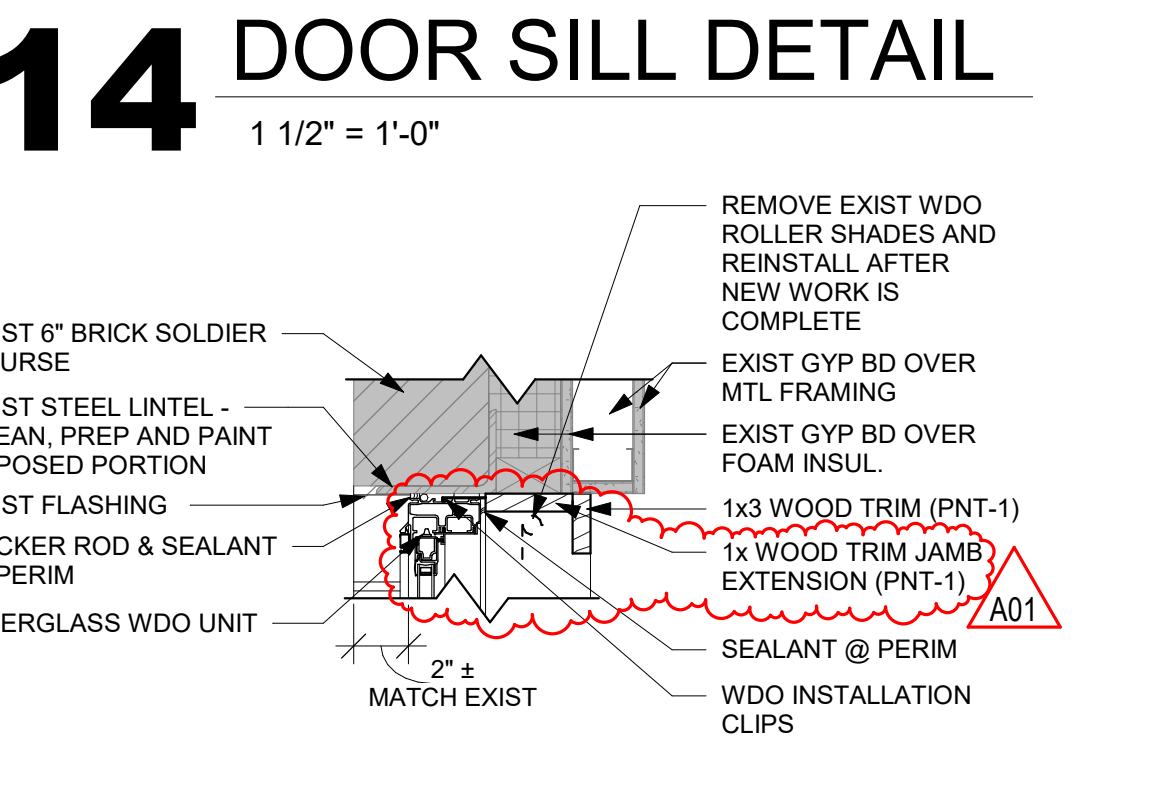
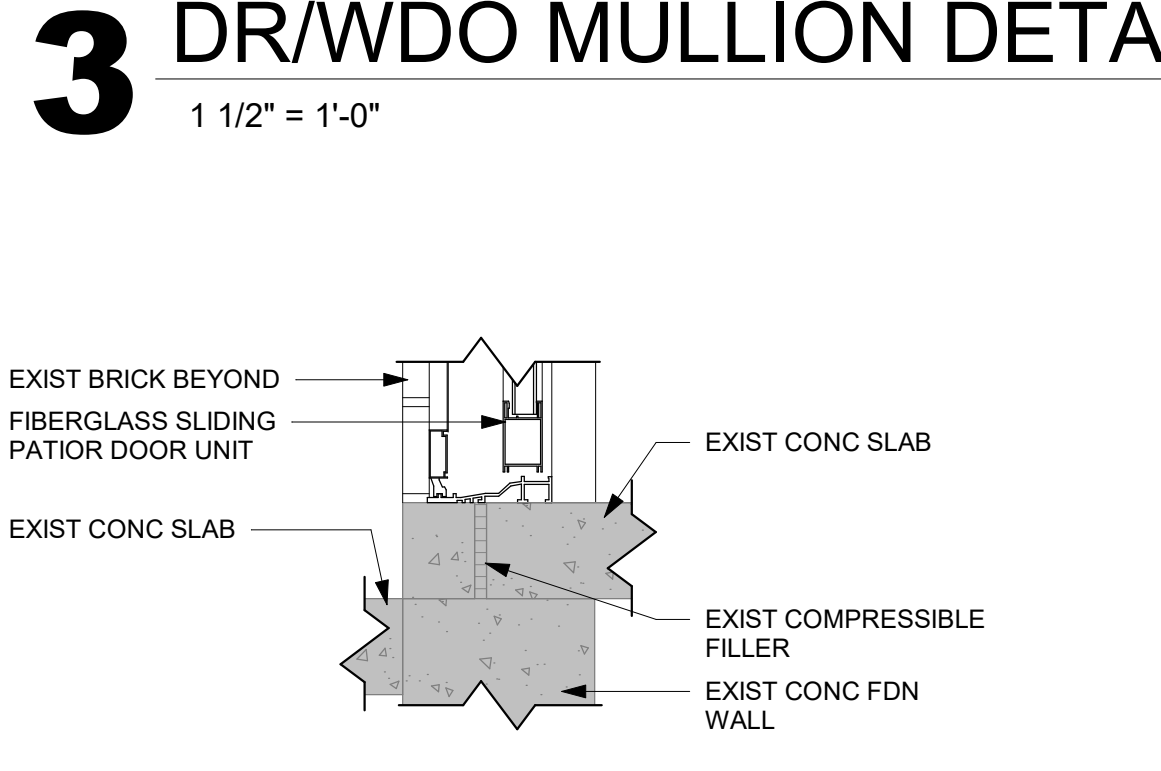
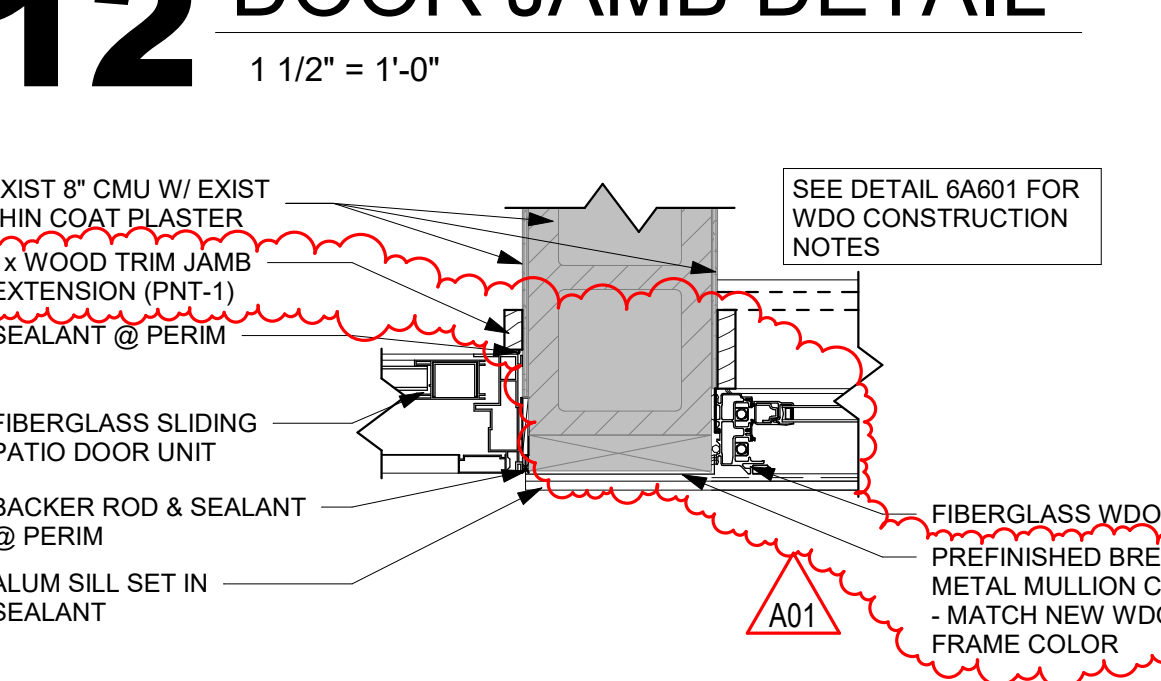
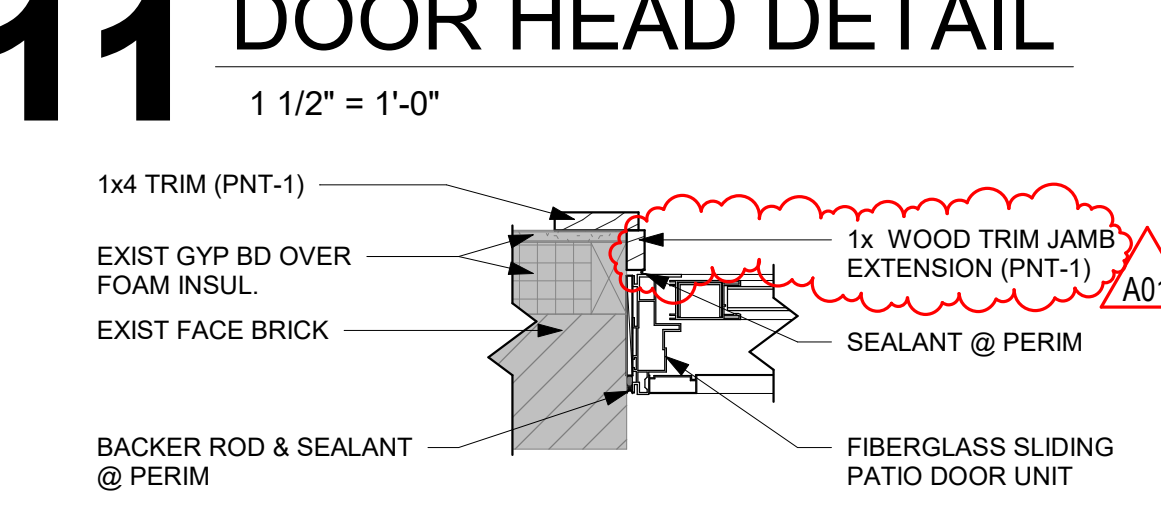
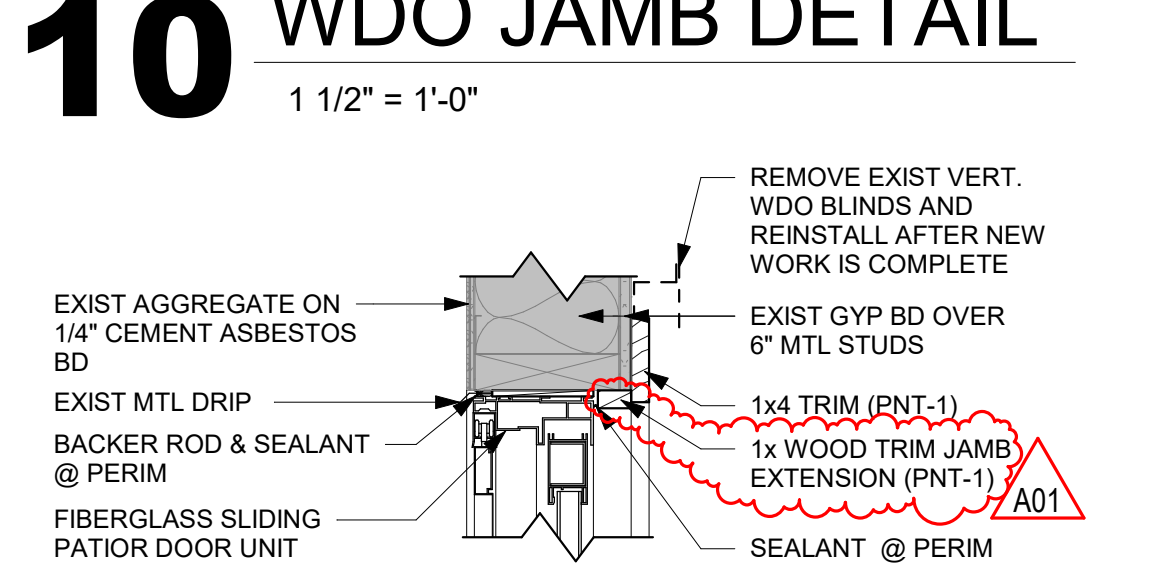
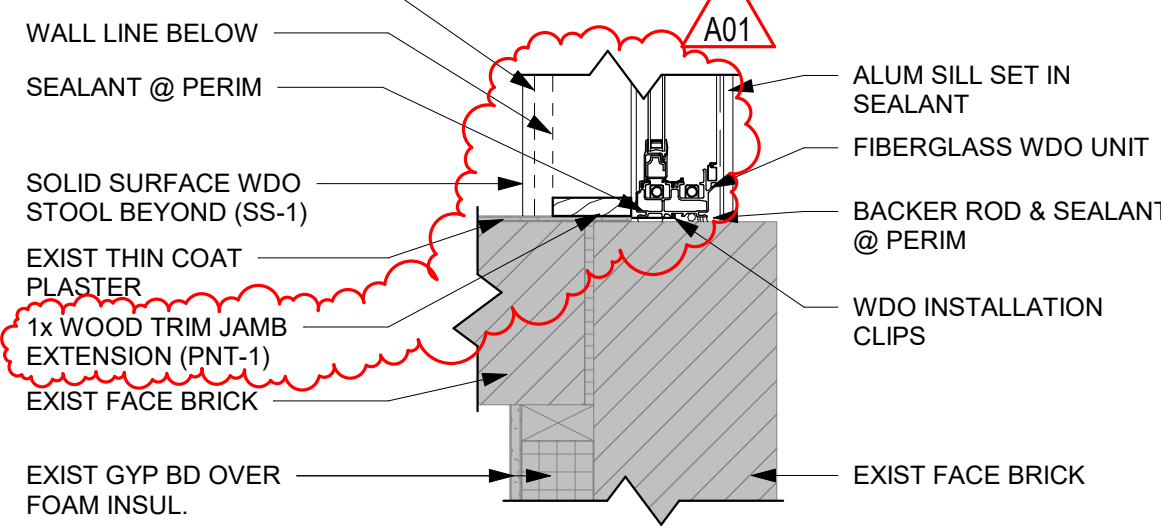
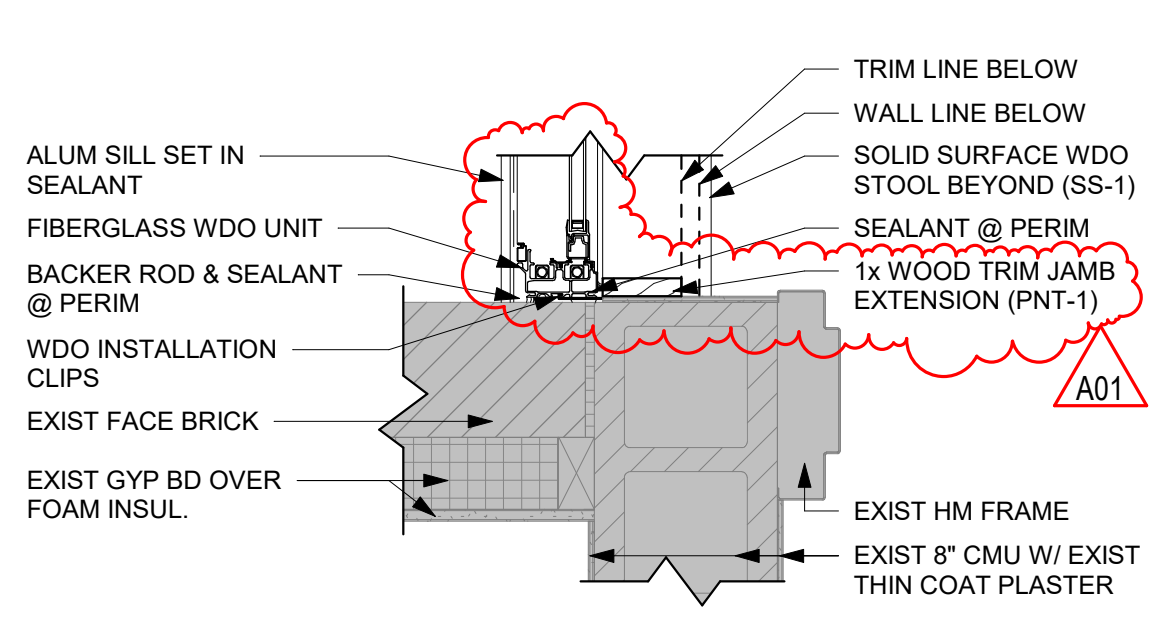
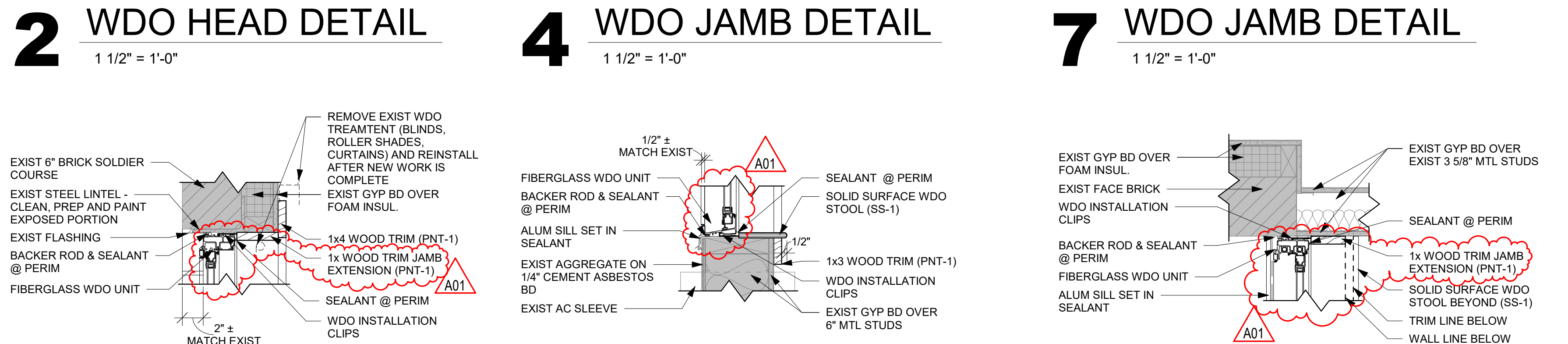
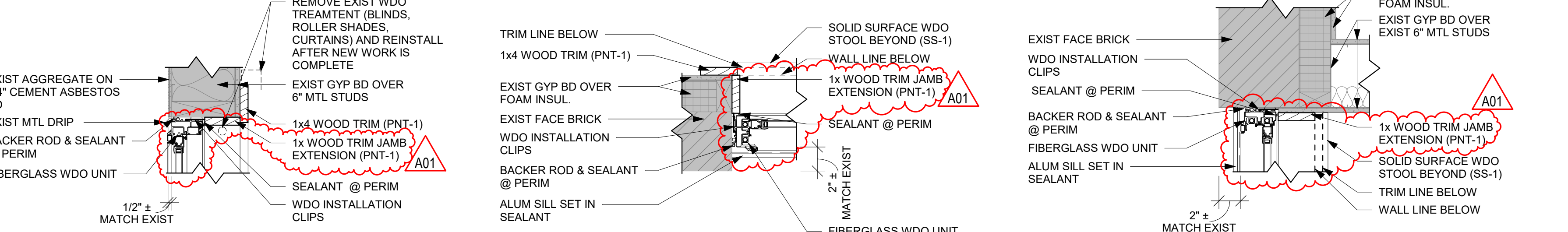
DOOR SCHEDULE GENERAL NOTES		DOOR SCHEDULE REMARKS
FG = FIBERGLASS ALUM = ALUMINUM A. SEE SPECIFICATIONS FOR DOOR HARDWARE GROUPS. B. ALL DOUBLE DOORS TO HAVE TWO EQUAL LEAFS UNLESS NOTED OTHERWISE.		1. AUTO OPERATOR REQUIRED. 2. REUSE EXISTING KEY SWITCH. 3. SLIDING GLASS DOOR. 4. ELECTRIC STRIKE REQUIRED.
DOOR TYPES		

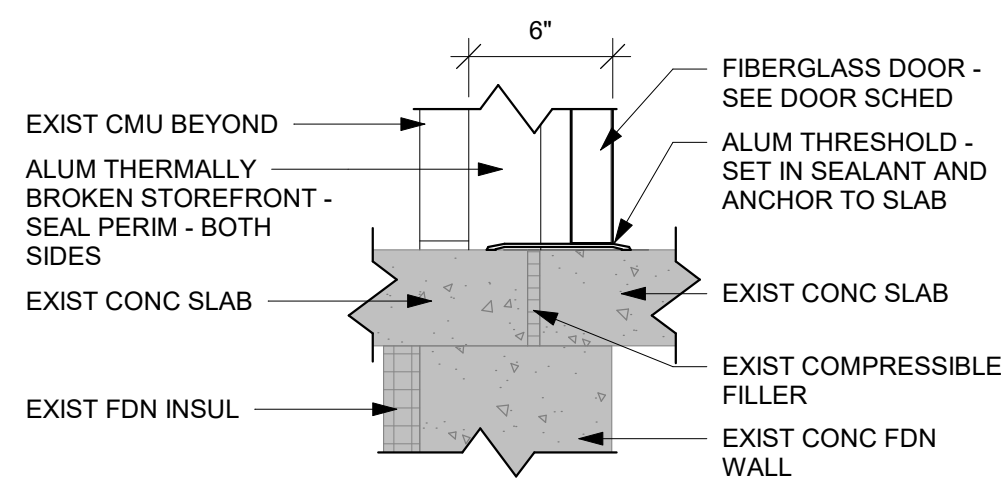
The figure contains several architectural drawings:

- 1 FIBERGLASS WDO ELEV**: A plan view of a window unit with dimensions 10'-8" M.O. and 6'-0". It shows a grid of windows with labels like A01, A02, A03, A04, A05, A06, A07, A08, A09, A10, A11, A12, A13, A14, A15, A16, A17, A18, A19, A20, A21, A22, A23, A24, A25, A26, A27, A28, A29, A30, A31, A32, A33, A34, A35, A36, A37, A38, A39, A40, A41, A42, A43, A44, A45, A46, A47, A48, A49, A50, A51, A52, A53, A54, A55, A56, A57, A58, A59, A60, A61, A62, A63, A64, A65, A66, A67, A68, A69, A70, A71, A72, A73, A74, A75, A76, A77, A78, A79, A80, A81, A82, A83, A84, A85, A86, A87, A88, A89, A90, A91, A92, A93, A94, A95, A96, A97, A98, A99, A100. It includes labels like "PREFINISHED BREAK METAL MULLION COVER", "DOUBLE HUNG WDO", and "DETAIL @ 9TH FLOOR ONLY".
- 2 FIBERGLASS WDO ELEV**: A plan view of a window unit with dimensions 10'-8" M.O. and 6'-0". It shows a grid of windows with labels like A01, A02, A03, A04, A05, A06, A07, A08, A09, A10, A11, A12, A13, A14, A15, A16, A17, A18, A19, A20, A21, A22, A23, A24, A25, A26, A27, A28, A29, A30, A31, A32, A33, A34, A35, A36, A37, A38, A39, A40, A41, A42, A43, A44, A45, A46, A47, A48, A49, A50, A51, A52, A53, A54, A55, A56, A57, A58, A59, A60, A61, A62, A63, A64, A65, A66, A67, A68, A69, A70, A71, A72, A73, A74, A75, A76, A77, A78, A79, A80, A81, A82, A83, A84, A85, A86, A87, A88, A89, A90, A91, A92, A93, A94, A95, A96, A97, A98, A99, A100. It includes labels like "PREFINISHED BREAK METAL MULLION COVER", "DOUBLE HUNG WDO", and "DETAIL @ 9TH FLOOR ONLY".
- 3 FIBERGLASS WDO ELEV**: A plan view of a window unit with dimensions 10'-8" M.O. and 6'-0". It shows a grid of windows with labels like A01, A02, A03, A04, A05, A06, A07, A08, A09, A10, A11, A12, A13, A14, A15, A16, A17, A18, A19, A20, A21, A22, A23, A24, A25, A26, A27, A28, A29, A30, A31, A32, A33, A34, A35, A36, A37, A38, A39, A40, A41, A42, A43, A44, A45, A46, A47, A48, A49, A50, A51, A52, A53, A54, A55, A56, A57, A58, A59, A60, A61, A62, A63, A64, A65, A66, A67, A68, A69, A70, A71, A72, A73, A74, A75, A76, A77, A78, A79, A80, A81, A82, A83, A84, A85, A86, A87, A88, A89, A90, A91, A92, A93, A94, A95, A96, A97, A98, A99, A100. It includes labels like "PREFINISHED BREAK METAL MULLION COVER", "DOUBLE HUNG WDO", and "DETAIL @ 9TH FLOOR ONLY".
- 4 FIBERGLASS WDO ELEV**: A plan view of a window unit with dimensions 10'-8" M.O. and 6'-0". It shows a grid of windows with labels like A01, A02, A03, A04, A05, A06, A07, A08, A09, A10, A11, A12, A13, A14, A15, A16, A17, A18, A19, A20, A21, A22, A23, A24, A25, A26, A27, A28, A29, A30, A31, A32, A33, A34, A35, A36, A37, A38, A39, A40, A41, A42, A43, A44, A45, A46, A47, A48, A49, A50, A51, A52, A53, A54, A55, A56, A57, A58, A59, A60, A61, A62, A63, A64, A65, A66, A67, A68, A69, A70, A71, A72, A73, A74, A75, A76, A77, A78, A79, A80, A81, A82, A83, A84, A85, A86, A87, A88, A89, A90, A91, A92, A93, A94, A95, A96, A97, A98, A99, A100. It includes labels like "PREFINISHED BREAK METAL MULLION COVER", "DOUBLE HUNG WDO", and "DETAIL @ 9TH FLOOR ONLY".
- 5 FIBERGLASS WDO ELEV**: A plan view of a window unit with dimensions 10'-8" M.O. and 6'-0". It shows a grid of windows with labels like A01, A02, A03, A04, A05, A06, A07, A08, A09, A10, A11, A12, A13, A14, A15, A16, A17, A18, A19, A20, A21, A22, A23, A24, A25, A26, A27, A28, A29, A30, A31, A32, A33, A34, A35, A36, A37, A38, A39, A40, A41, A42, A43, A44, A45, A46, A47, A48, A49, A50, A51, A52, A53, A54, A55, A56, A57, A58, A59, A60, A61, A62, A63, A64, A65, A66, A67, A68, A69, A70, A71, A72, A73, A74, A75, A76, A77, A78, A79, A80, A81, A82, A83, A84, A85, A86, A87, A88, A89, A90, A91, A92, A93, A94, A95, A96, A97, A98, A99, A100. It includes labels like "PREFINISHED BREAK METAL MULLION COVER", "DOUBLE HUNG WDO", and "DETAIL @ 9TH FLOOR ONLY".
- 6 WDO MULLION DETAIL**: A cross-section detail of a window mullion. It shows the mullion, the window frame, the window unit, and the window cover. Labels include "EXIST 8" CMU W/ EXIST THIN COAT PLASTER TRIM LINE BELOW", "WDO INSTALLATION CLIPS", "BACKER ROD & SEALANT @ PERIM", "ALUM SILL SET IN SEALANT", "SOLID SURFACE WDO STOOL BEYOND WALL LINE BELOW", "1x WOOD TRIM JAMB EXTENSION (PNT-1) SEALANT @ PERIM", "FIBERGLASS WDO UNIT", "PREFINISHED BREAK METAL MULLION COVER - MATCH NEW WDO FRAME COLOR".

NOTE: SEE 16A01 FOR WINDOW TRIM ELEVATION.

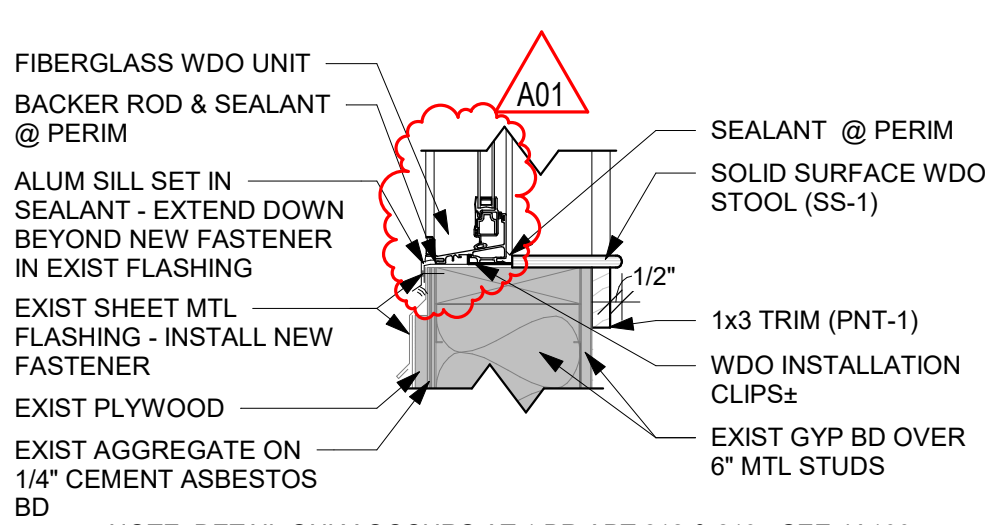
1/4" = 1'-0"





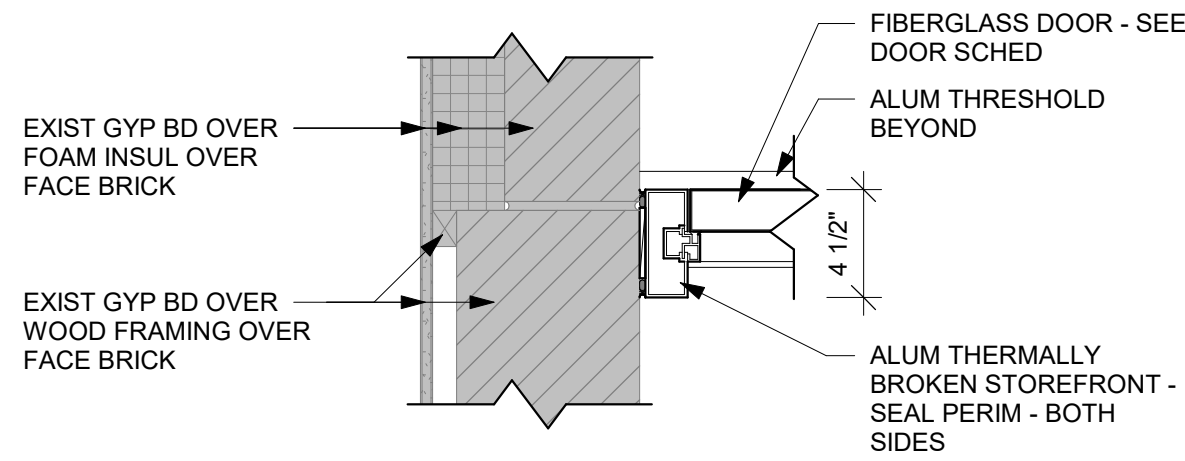
1 DOOR SILL DETAIL

1 1/2" = 1'-0"



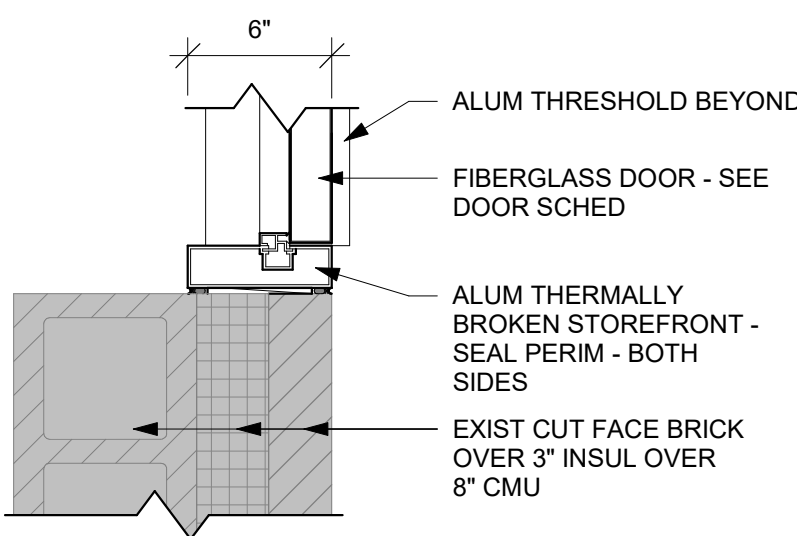
7 WDO SILL DETAIL

1 1/2" = 1'-0"



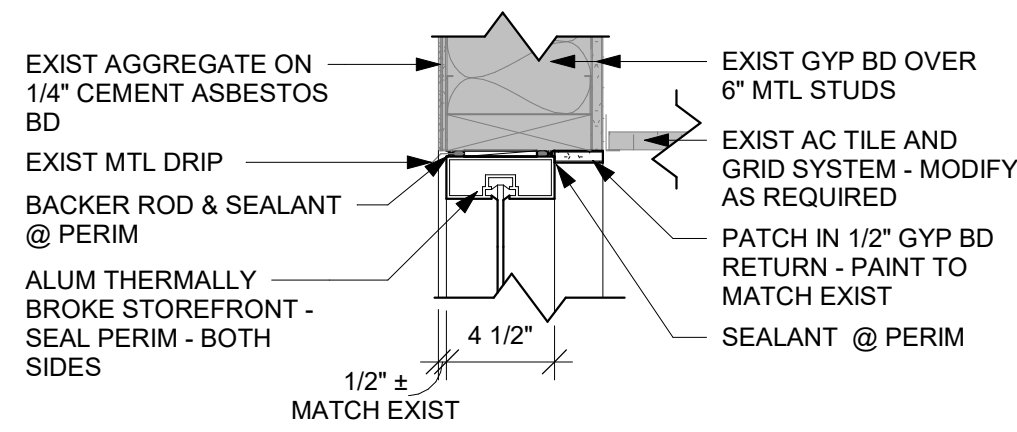
2 DOOR JAMB DETAIL

1 1/2" = 1'-0"



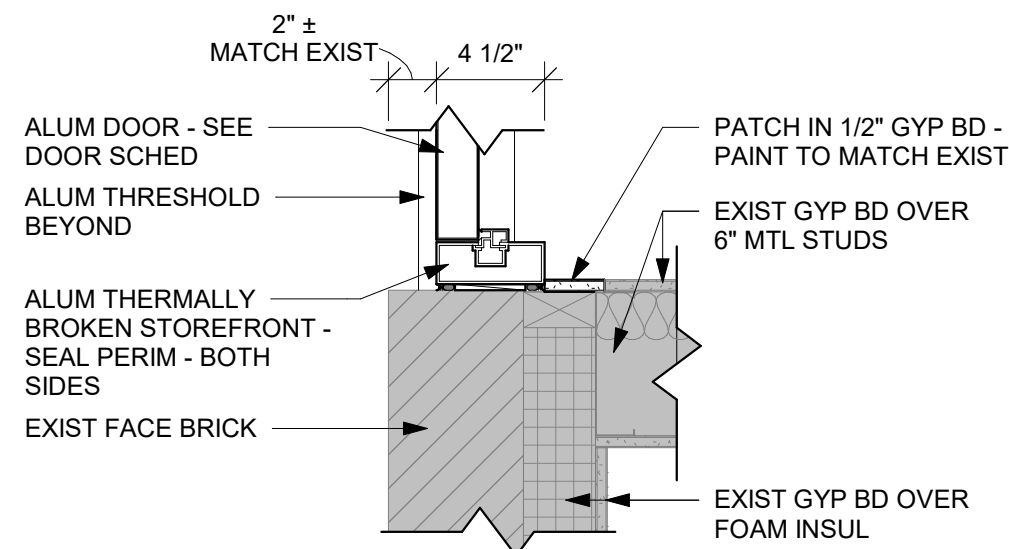
3 DOOR JAMB DETAIL

1 1/2" = 1'-0"



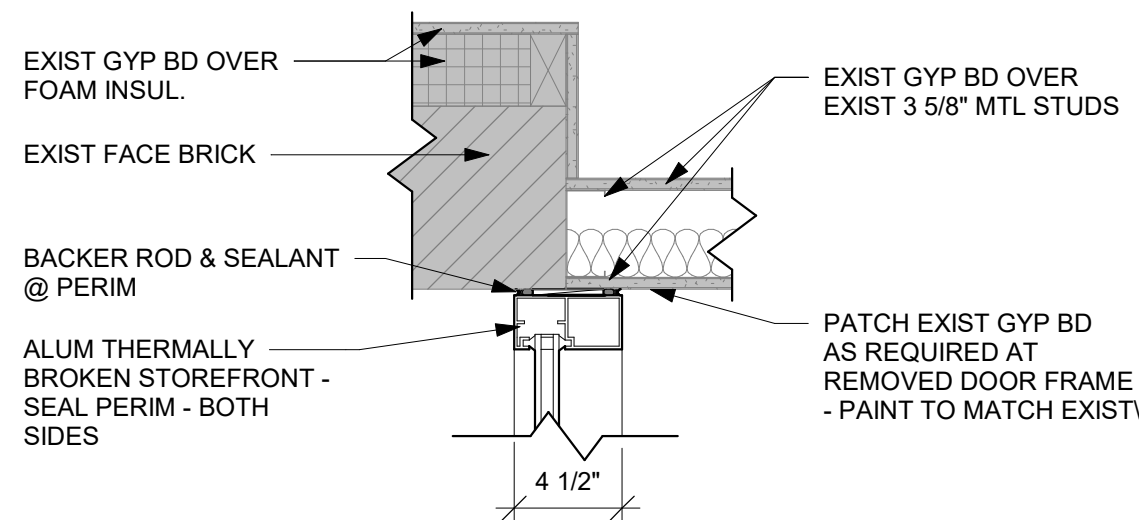
4 DOOR HEAD DETAIL

1 1/2" = 1'-0"



5 DOOR JAMB DETAIL

1 1/2" = 1'-0"



6 DOOR JAMB DETAIL

1 1/2" = 1'-0"

